

CXCL2 Rabbit pAb

Catalog No.: A12639 **1 Publications**

Basic Information

Observed MW

11kDa

Calculated MW

11kDa

Category

Primary antibody

Applications

ELISA, WB

Cross-Reactivity

Rat

Background

This antimicrobial gene is part of a chemokine superfamily that encodes secreted proteins involved in immunoregulatory and inflammatory processes. The superfamily is divided into four subfamilies based on the arrangement of the N-terminal cysteine residues of the mature peptide. This chemokine, a member of the CXC subfamily, is expressed at sites of inflammation and may suppress hematopoietic progenitor cell proliferation.

Recommended Dilutions

WB 1:500 - 1:2000

Immunogen Information

Gene ID

2920

Swiss Prot

P19875

Immunogen

Recombinant fusion protein containing a sequence corresponding to amino acids 1-107 of human CXCL2 (NP_002080.1).

Synonyms

GRO2; GROb; MIP2; MIP2A; SCYB2; MGSA-b; MIP-2a; CINC-2a; CXCL2

Contact

 | 400-999-6126

 | cn.market@abclonal.com.cn

 | www.abclonal.com.cn

Product Information

Source

Rabbit

Isotype

IgG

Purification

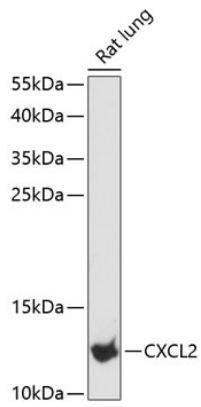
Affinity purification

Storage

Store at -20°C. Avoid freeze / thaw cycles.

Buffer: PBS with 0.01% thimerosal, 50% glycerol, pH7.3.

Validation Data



Western blot analysis of lysates from rat lung, using CXCL2 Rabbit pAb (A12639) at 1:3000 dilution.
Secondary antibody: HRP Goat Anti-Rabbit IgG (H+L) (AS014) at 1:10000 dilution.
Lysates/proteins: 25µg per lane.
Blocking buffer: 3% nonfat dry milk in TBST.
Detection: ECL Basic Kit (RM00020).
Exposure time: 90s.