

BRWD1 Rabbit pAb

Catalog No.: A12656

Basic Information

Observed MW

263kDa

Calculated MW

263kDa

Category

Primary antibody

Applications

WB, ELISA

Cross-Reactivity

Human, Mouse

Background

This gene encodes a member of the WD repeat protein family. WD repeats are minimally conserved regions of approximately 40 amino acids typically bracketed by gly-his and trp-aspartate (GH-WD) residues which may facilitate formation of heterotrimeric or multiprotein complexes. Members of this family are involved in a variety of cellular processes including cell cycle progression, signal transduction, apoptosis, and gene regulation. This protein contains 2 bromodomains and multiple WD repeats. This gene is located within the Down syndrome region-2 on chromosome 21. Alternative splicing of this gene generates multiple transcript variants encoding distinct isoforms. In mouse, this gene encodes a nuclear protein that has a polyglutamine-containing region that functions as a transcriptional activation domain which may regulate chromatin remodelling and associates with a component of the SWI/SNF chromatin remodelling complex.

Recommended Dilutions

WB 1:1000 - 1:3000**ELISA** Recommended starting concentration is 1 µg/mL. Please optimize the concentration based on your specific assay requirements.

Immunogen Information

Gene ID

54014

Swiss Prot

Q9NSI6

Immunogen

Recombinant protein (or fragment). This information is considered to be commercially sensitive.

Synonyms

N143; WDR9; WRD9; DCAF19; C21orf107; BRWD1

Contact

 | 400-999-6126 | cn.market@abclonal.com.cn | www.abclonal.com.cn

Product Information

Source

Rabbit

Isotype

IgG

Purification

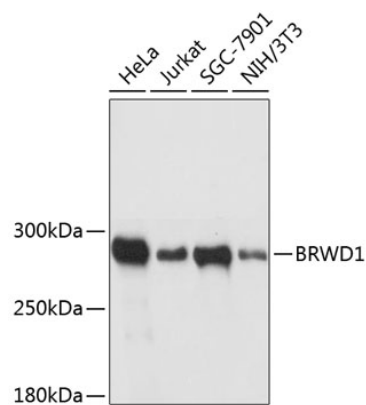
Affinity purification

Storage

Store at -20°C. Avoid freeze / thaw cycles.

Buffer: PBS with 0.01% thimerosal, 50% glycerol, pH 7.3.

Validation Data



Western blot analysis of various lysates using BRWD1 Rabbit pAb (A12656) at 1:3000 dilution.
Secondary antibody: HRP-conjugated Goat anti-Rabbit IgG (H+L) (AS014) at 1:10000 dilution.
Lysates/proteins: 25µg per lane.
Blocking buffer: 3% nonfat dry milk in TBST.
Detection: ECL Basic Kit (RM00020).
Exposure time: 5s.