

IFT74 Rabbit pAb

Catalog No.: A12672

Basic Information

Observed MW

80kDa

Calculated MW

69kDa

Category

Primary antibody

Applications

ELISA, WB

Cross-Reactivity

Human, Mouse, Rat

Background

This gene encodes a core intraflagellar transport (IFT) protein which belongs to a multi-protein complex involved in the transport of ciliary proteins along axonemal microtubules. IFT proteins are found at the base of the cilium as well as inside the cilium, where they assemble into long arrays between the ciliary base and tip. This protein, together with intraflagellar transport protein 81, binds and transports tubulin within cilia and is required for ciliogenesis. Naturally occurring mutations in this gene are associated with amyotrophic lateral sclerosis--frontotemporal dementia and Bardet-Biedl Syndrome.

Recommended Dilutions

WB 1:1000 - 1:3000

Immunogen Information

Gene ID

80173

Swiss Prot

Q96LB3

Immunogen

Recombinant fusion protein containing a sequence corresponding to amino acids 1-372 of human IFT74 (NP_001092694.1).

Synonyms

CMG1; BBS22; CCDC2; CMG-1; JBTS40; SPGF58; IFT74

Contact

☎ | 400-999-6126

✉ | cn.market@abclonal.com.cn

🌐 | www.abclonal.com.cn

Product Information

Source

Rabbit

Isotype

IgG

Purification

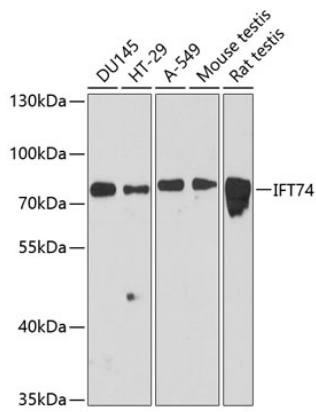
Affinity purification

Storage

Store at -20°C. Avoid freeze / thaw cycles.

Buffer: PBS with 0.01% thimerosal, 50% glycerol, pH7.3.

Validation Data



Western blot analysis of various lysates using IFT74 Rabbit pAb (A12672) at 1:3000 dilution.
Secondary antibody: HRP Goat Anti-Rabbit IgG (H+L) (AS014) at 1:10000 dilution.
Lysates/proteins: 25µg per lane.
Blocking buffer: 3% nonfat dry milk in TBST.
Detection: ECL Basic Kit (RM00020).
Exposure time: 90s.