

SLC1A5 Rabbit pAb

Catalog No.: A12676

Basic Information

Observed MW

57kDa

Calculated MW

57kDa

Category

Primary antibody

Applications

ELISA, WB

Cross-Reactivity

Rat

Background

The SLC1A5 gene encodes a sodium-dependent neutral amino acid transporter that can act as a receptor for RD114/type D retrovirus (Larriba et al., 2001 [PubMed 11781704]).

Recommended Dilutions

WB 1:500 - 1:2000

Immunogen Information

Gene ID

6510

Swiss Prot

Q15758

Immunogen

Recombinant fusion protein containing a sequence corresponding to amino acids 1-100 of human SLC1A5 (NP_005619.1).

Synonyms

R16; AAAT; ATBO; M7V1; RDRC; ASCT2; M7VS1; SLC1A5

Contact

 | 400-999-6126

 | cn.market@abclonal.com.cn

 | www.abclonal.com.cn

Product Information

Source

Rabbit

Isotype

IgG

Purification

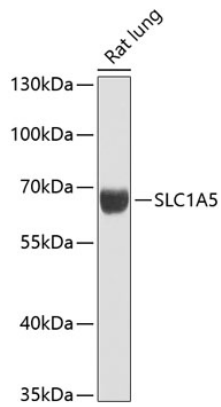
Affinity purification

Storage

Store at -20°C. Avoid freeze / thaw cycles.

Buffer: PBS with 0.02% sodium azide, 50% glycerol, pH7.3.

Validation Data



Western blot analysis of extracts of rat lung, using SLC1A5 antibody (A12676) at 1:1000 dilution.
Secondary antibody: HRP Goat Anti-Rabbit IgG (H+L) (AS014) at 1:10000 dilution.
Lysates/proteins: 25µg per lane.
Blocking buffer: 3% nonfat dry milk in TBST.
Detection: ECL Basic Kit (RM00020).
Exposure time: 90s.