

# AREG Rabbit pAb

Catalog No.: A12680 **1 Publications**

## Basic Information

### Observed MW

Refer to figures

### Calculated MW

28kDa

### Category

Primary antibody

### Applications

ELISA,IF/ICC

### Cross-Reactivity

Mouse

## Background

The protein encoded by this gene is a member of the epidermal growth factor family. It is an autocrine growth factor as well as a mitogen for astrocytes, Schwann cells and fibroblasts. It is related to epidermal growth factor (EGF) and transforming growth factor alpha (TGF-alpha). The protein interacts with the EGF/TGF-alpha receptor to promote the growth of normal epithelial cells, and it inhibits the growth of certain aggressive carcinoma cell lines. It also functions in mammary gland, oocyte and bone tissue development. This gene is associated with a psoriasis-like skin phenotype, and is also associated with other pathological disorders, including various types of cancers and inflammatory conditions.

## Recommended Dilutions

IF/ICC 1:50 - 1:200

## Immunogen Information

### Gene ID

374

### Swiss Prot

P15514

### Immunogen

Recombinant fusion protein containing a sequence corresponding to amino acids 20-252 of human AREG (NP\_001648.1).

### Synonyms

AR; SDGF; AREGB; CRDGF; AREG

## Contact

☎ | 400-999-6126

✉ | [cn.market@abclonal.com.cn](mailto:cn.market@abclonal.com.cn)

🌐 | [www.abclonal.com.cn](http://www.abclonal.com.cn)

## Product Information

### Source

Rabbit

### Isotype

IgG

### Purification

Affinity purification

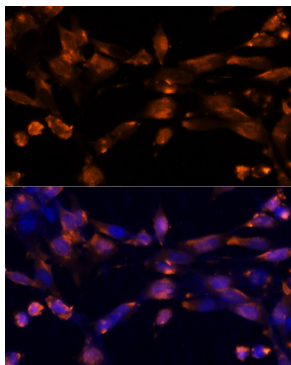
### Storage

Store at -20°C. Avoid freeze / thaw cycles.

Buffer: PBS with 0.05% proclin300,50% glycerol,pH7.3.

## Validation Data

---



Immunofluorescence analysis of NIH-3T3 cells using AREG Rabbit pAb (A12680) at dilution of 1:100 (40x lens). Secondary antibody: Cy3 Goat Anti-Rabbit IgG (H+L) (AS007) at 1:500 dilution. Blue: DAPI for nuclear staining.