

CUL4B Rabbit pAb

Catalog No.: A12696 **1 Publications**

Basic Information

Observed MW

105kDa

Calculated MW

104kDa

Category

Primary antibody

Applications

ELISA,WB

Cross-Reactivity

Human, Mouse

Background

This gene is a member of the cullin family. The encoded protein forms a complex that functions as an E3 ubiquitin ligase and catalyzes the polyubiquitination of specific protein substrates in the cell. The protein interacts with a ring finger protein, and is required for the proteolysis of several regulators of DNA replication including chromatin licensing and DNA replication factor 1 and cyclin E. Multiple transcript variants encoding different isoforms have been found for this gene.

Recommended Dilutions

WB 1:500 - 1:2000

Immunogen Information

Gene ID

8450

Swiss Prot

Q13620

Immunogen

Recombinant fusion protein containing a sequence corresponding to amino acids 1-152 of human CUL4B (NP_003579.3).

Synonyms

SFM2; MRXSC; CUL-4B; MRXHF2; MRXS15; CUL4B

Contact

 | 400-999-6126

 | cn.market@abclonal.com.cn

 | www.abclonal.com.cn

Product Information

Source

Rabbit

Isotype

IgG

Purification

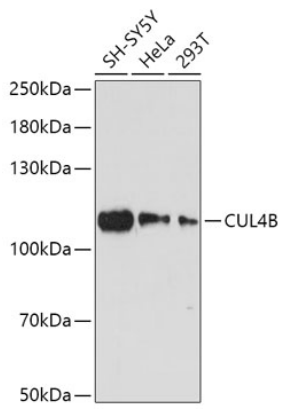
Affinity purification

Storage

Store at -20°C. Avoid freeze / thaw cycles.

Buffer: PBS with 0.01% thimerosal, 50% glycerol, pH7.3.

Validation Data



Western blot analysis of various lysates using CUL4B Rabbit pAb (A12696) at 1:1000 dilution.
Secondary antibody: HRP Goat Anti-Rabbit IgG (H+L) (AS014) at 1:10000 dilution.
Lysates/proteins: 25µg per lane.
Blocking buffer: 3% nonfat dry milk in TBST.
Detection: ECL Basic Kit (RM00020).
Exposure time: 180s.