

POLR1E Rabbit pAb

Catalog No.: A12700 **1 Publications**

Basic Information

Observed MW

53kDa

Calculated MW

47kDa

Category

Primary antibody

Applications

ELISA, WB, IP

Cross-Reactivity

Human, Mouse, Rat

Background

Predicted to enable DNA binding activity; DNA-directed 5'-3' RNA polymerase activity; and RNA polymerase I general transcription initiation factor binding activity. Involved in nucleolar large rRNA transcription by RNA polymerase I. Located in fibrillar center and nucleoplasm.

Recommended Dilutions

WB 1:500 - 1:2000

IP 0.5µg-4µg antibody for
200µg-400µg extracts of
whole cells

Immunogen Information

Gene ID

64425

Swiss Prot

Q9GZS1

Immunogen

Recombinant fusion protein containing a sequence corresponding to amino acids 1-419 of human POLR1E (NP_071935.1).

Synonyms

A49; PAF53; PRAF1; RPA49; POLR1E

Contact

☎ | 400-999-6126

✉ | cn.market@abclonal.com.cn

🌐 | www.abclonal.com.cn

Product Information

Source

Rabbit

Isotype

IgG

Purification

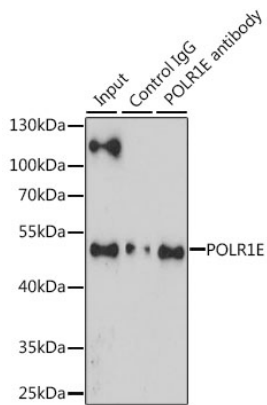
Affinity purification

Storage

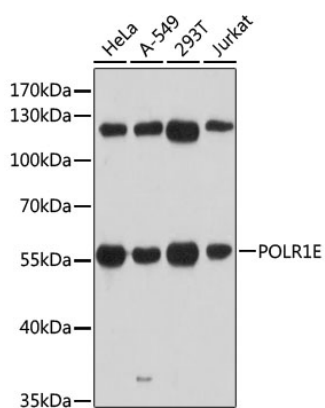
Store at -20°C. Avoid freeze / thaw cycles.

Buffer: PBS with 0.01% thimerosal, 50% glycerol, pH7.3.

Validation Data



Immunoprecipitation analysis of 200 µg extracts of Jurkat cells, using 3 µg POLR1E antibody (A12700). Western blot was performed from the immunoprecipitate using POLR1E antibody (A12700) at a dilution of 1:1000.



Western blot analysis of various lysates using POLR1E Rabbit pAb (A12700) at 1:3000 dilution. Secondary antibody: HRP Goat Anti-Rabbit IgG (H+L) (AS014) at 1:10000 dilution. Lysates/proteins: 25µg per lane. Blocking buffer: 3% nonfat dry milk in TBST. Detection: ECL Basic Kit (RM00020). Exposure time: 30s.