

# CD248 Rabbit pAb

Catalog No.: A12703

## Basic Information

### Observed MW

81kDa/165kDa

### Calculated MW

81kDa

### Category

Primary antibody

### Applications

ELISA, WB

### Cross-Reactivity

Human, Mouse, Rat

## Background

Predicted to enable extracellular matrix binding activity and extracellular matrix protein binding activity. Predicted to be involved in cell migration. Predicted to act upstream of or within several processes, including anatomical structure regression; lymph node development; and positive regulation of endothelial cell apoptotic process. Located in extracellular exosome.

## Recommended Dilutions

WB 1:1000 - 1:5000

## Immunogen Information

### Gene ID

57124

### Swiss Prot

Q9HCU0

### Immunogen

Recombinant fusion protein containing a sequence corresponding to amino acids 18-150 of human CD248 (NP\_065137.1).

### Synonyms

TEM1; CD164L1; CD248

## Contact

☎ | 400-999-6126

✉ | [cn.market@abclonal.com.cn](mailto:cn.market@abclonal.com.cn)

🌐 | [www.abclonal.com.cn](http://www.abclonal.com.cn)

## Product Information

### Source

Rabbit

### Isotype

IgG

### Purification

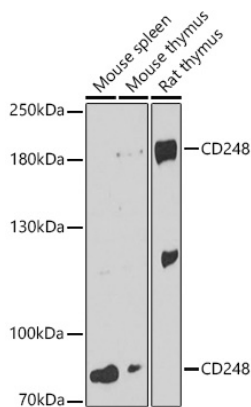
Affinity purification

### Storage

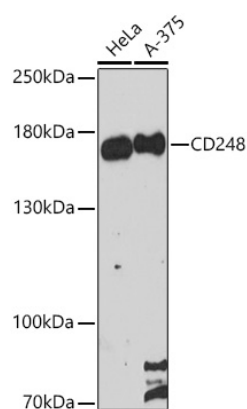
Store at -20°C. Avoid freeze / thaw cycles.

Buffer: PBS with 0.01% thimerosal, 50% glycerol, pH7.3.

## Validation Data



Western blot analysis of various lysates using CD248 Rabbit pAb (A12703) at 1:3000 dilution.  
Secondary antibody: HRP Goat Anti-Rabbit IgG (H+L) (AS014) at 1:10000 dilution.  
Lysates/proteins: 25µg per lane.  
Blocking buffer: 3% nonfat dry milk in TBST.  
Detection: ECL Enhanced Kit (RM00021).  
Exposure time: 90s.



Western blot analysis of various lysates using CD248 Rabbit pAb (A12703) at 1:3000 dilution.  
Secondary antibody: HRP Goat Anti-Rabbit IgG (H+L) (AS014) at 1:10000 dilution.  
Lysates/proteins: 25µg per lane.  
Blocking buffer: 3% nonfat dry milk in TBST.  
Detection: ECL Enhanced Kit (RM00021).  
Exposure time: 90s.