

CD248 Rabbit pAb

Catalog No.: A12706

Basic Information

Observed MW

81kDa

Calculated MW

81kDa

Category

Primary antibody

Applications

ELISA, WB

Cross-Reactivity

Human

Background

Predicted to enable extracellular matrix binding activity and extracellular matrix protein binding activity. Predicted to be involved in cell migration. Predicted to act upstream of or within several processes, including anatomical structure regression; lymph node development; and positive regulation of endothelial cell apoptotic process. Located in extracellular exosome.

Recommended Dilutions

WB 1:1000 - 1:5000

Immunogen Information

Gene ID

57124

Swiss Prot

Q9HCU0

Immunogen

Recombinant fusion protein containing a sequence corresponding to amino acids 18-150 of human CD248 (NP_065137.1).

Synonyms

TEM1; CD164L1; CD248

Contact

☎ | 400-999-6126

✉ | cn.market@abclonal.com.cn

🌐 | www.abclonal.com.cn

Product Information

Source

Rabbit

Isotype

IgG

Purification

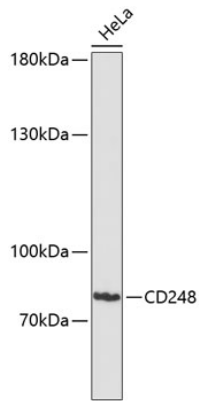
Affinity purification

Storage

Store at -20°C. Avoid freeze / thaw cycles.

Buffer: PBS with 0.01% thimerosal, 50% glycerol, pH7.3.

Validation Data



Western blot analysis of lysates from HeLa cells, using CD248 Rabbit pAb (A12706) at 1:3000 dilution.
Secondary antibody: HRP Goat Anti-Rabbit IgG (H+L) (AS014) at 1:10000 dilution.
Lysates/proteins: 25 μ g per lane.
Blocking buffer: 3% nonfat dry milk in TBST.
Detection: ECL Enhanced Kit (RM00021).
Exposure time: 90s.