

# GUCY1A3 Rabbit pAb

Catalog No.: A12710

## Basic Information

### Observed MW

77kDa

### Calculated MW

77kDa

### Category

Primary antibody

### Applications

ELISA, WB, IF/ICC

### Cross-Reactivity

Human, Mouse, Rat

## Background

Soluble guanylate cyclases are heterodimeric proteins that catalyze the conversion of GTP to 3',5'-cyclic GMP and pyrophosphate. The protein encoded by this gene is an alpha subunit of this complex and it interacts with a beta subunit to form the guanylate cyclase enzyme, which is activated by nitric oxide. Several transcript variants encoding a few different isoforms have been found for this gene.

## Recommended Dilutions

WB 1:1000 - 1:3000

IF/ICC 1:50 - 1:200

## Immunogen Information

### Gene ID

2982

### Swiss Prot

Q02108

### Immunogen

Recombinant fusion protein containing a sequence corresponding to amino acids 1-120 of human GUCY1A3 (NP\_000847.2).

### Synonyms

GUCA3; MYMY6; GC-SA3; GUC1A3; GUCSA3; GUCY1A3; GCS-alpha-3; GC-S-alpha-1

## Contact

☎ | 400-999-6126

✉ | [cn.market@abclonal.com.cn](mailto:cn.market@abclonal.com.cn)

🌐 | [www.abclonal.com.cn](http://www.abclonal.com.cn)

## Product Information

### Source

Rabbit

### Isotype

IgG

### Purification

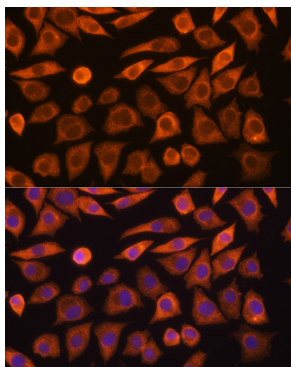
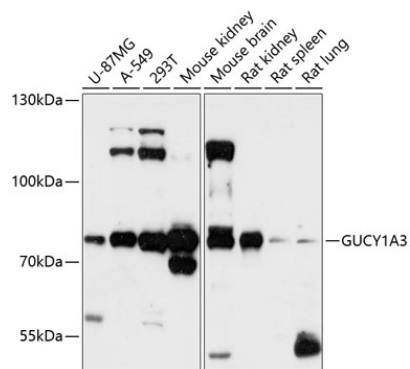
Affinity purification

### Storage

Store at -20°C. Avoid freeze / thaw cycles.

Buffer: PBS with 0.01% thimerosal, 50% glycerol, pH7.3.

## Validation Data



Immunofluorescence analysis of L929 cells using GUCY1A3 Rabbit pAb (A12710) at dilution of 1:100 (40x lens). Secondary antibody: Cy3 Goat Anti-Rabbit IgG (H+L) (AS007) at 1:500 dilution. Blue: DAPI for nuclear staining.