

LHX9 Rabbit pAb

Catalog No.: A12717

Basic Information

Observed MW

54kDa

Calculated MW

44kDa

Category

Primary antibody

Applications

WB, ELISA

Cross-Reactivity

Human, Mouse, Rat

Background

This gene encodes a member of the LIM homeobox gene family of developmentally expressed transcription factors. The encoded protein contains a homeodomain and two cysteine-rich zinc-binding LIM domains involved in protein-protein interactions. The protein is highly similar to a mouse protein that causes gonadal agenesis when inactivated, suggesting a role in gonadal development. Alternative splicing results in multiple transcript variants.

Recommended Dilutions

WB 1:500 - 1:2000

ELISA Recommended starting concentration is 1 µg/mL. Please optimize the concentration based on your specific assay requirements.

Immunogen Information

Gene ID

56956

Swiss Prot

Q9NQ69

Immunogen

Recombinant protein (or fragment). This information is considered to be commercially sensitive.

Synonyms

LHX9

Contact

 | 400-999-6126

 | cn.market@abclonal.com.cn

 | www.abclonal.com.cn

Product Information

Source

Rabbit

Isotype

IgG

Purification

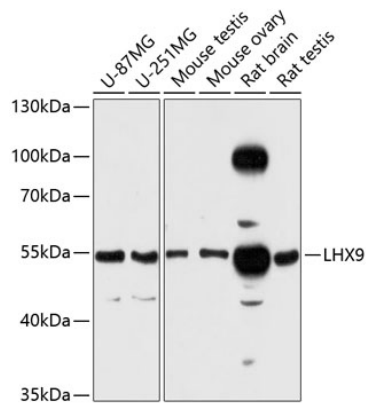
Affinity purification

Storage

Store at -20°C. Avoid freeze / thaw cycles.

Buffer: PBS with 0.01% thimerosal, 50% glycerol, pH7.3.

Validation Data



Western blot analysis of various lysates using LHX9 Rabbit pAb (A12717) at 1:3000 dilution.
Secondary antibody: HRP-conjugated Goat anti-Rabbit IgG (H+L) (AS014) at 1:10000 dilution.
Lysates/proteins: 25µg per lane.
Blocking buffer: 3% nonfat dry milk in TBST.
Detection: ECL Enhanced Kit (RM00021).
Exposure time: 90s.