

JAG1 Rabbit pAb

Catalog No.: A12733 **6 Publications**

Basic Information

Observed MW

180kDa

Calculated MW

134kDa

Category

Primary antibody

Applications

ELISA, WB, IF/ICC

Cross-Reactivity

Human, Mouse

Background

The jagged 1 protein encoded by JAG1 is the human homolog of the Drosophila jagged protein. Human jagged 1 is the ligand for the receptor notch 1, the latter is involved in signaling processes. Mutations that alter the jagged 1 protein cause Alagille syndrome. Jagged 1 signalling through notch 1 has also been shown to play a role in hematopoiesis.

Recommended Dilutions

WB	1:500 - 1:1000
IF/ICC	1:50 - 1:200

Immunogen Information

Gene ID

182

Swiss Prot

P78504

Immunogen

Recombinant fusion protein containing a sequence corresponding to amino acids 34-180 of human JAG1 (NP_000205.1).

Synonyms

AGS; AHD; AWS; HJ1; AGS1; DCHE; CD339; JAGL1; CMT2HH; JAG1

Contact

 | 400-999-6126

 | cn.market@abclonal.com.cn

 | www.abclonal.com.cn

Product Information

Source

Rabbit

Isotype

IgG

Purification

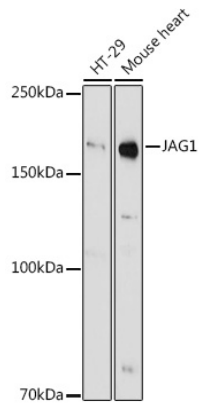
Affinity purification

Storage

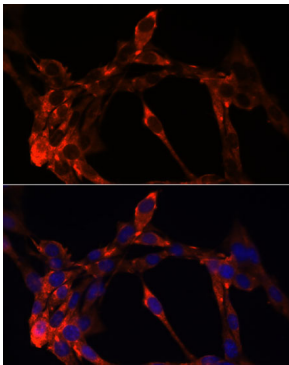
Store at -20°C. Avoid freeze / thaw cycles.

Buffer: PBS with 0.05% proclin300, 50% glycerol, pH7.3.

Validation Data



Western blot analysis of various lysates using JAG1 Rabbit pAb (A12733) at 1:1000 dilution.
Secondary antibody: HRP Goat Anti-Rabbit IgG (H+L) (AS014) at 1:10000 dilution.
Lysates/proteins: 25µg per lane.
Blocking buffer: 3% nonfat dry milk in TBST.
Detection: ECL Basic Kit (RM00020).
Exposure time: 90s.



Immunofluorescence analysis of NIH/3T3 cells using JAG1 Rabbit pAb (A12733) at dilution of 1:100. Secondary antibody: Cy3 Goat Anti-Rabbit IgG (H+L) (AS007) at 1:500 dilution. Blue: DAPI for nuclear staining.