

IGF1R Rabbit pAb

Catalog No.: A12736 **3 Publications**

Basic Information

Observed MW

100kDa

Calculated MW

155kDa

Category

Primary antibody

Applications

ELISA, WB

Cross-Reactivity

Mouse

Background

This receptor binds insulin-like growth factor with a high affinity. It has tyrosine kinase activity. The insulin-like growth factor I receptor plays a critical role in transformation events. Cleavage of the precursor generates alpha and beta subunits. It is highly overexpressed in most malignant tissues where it functions as an anti-apoptotic agent by enhancing cell survival. Alternatively spliced transcript variants encoding distinct isoforms have been found for this gene.

Recommended Dilutions

WB 1:500 - 1:1000

Immunogen Information

Gene ID

3480

Swiss Prot

P08069

Immunogen

Recombinant fusion protein containing a sequence corresponding to amino acids 741-910 of human IGF1R (NP_000866.1).

Synonyms

IGFR; CD221; IGFIR; JTK13; IGF1R

Contact

☎ | 400-999-6126

✉ | cn.market@abclonal.com.cn

🌐 | www.abclonal.com.cn

Product Information

Source

Rabbit

Isotype

IgG

Purification

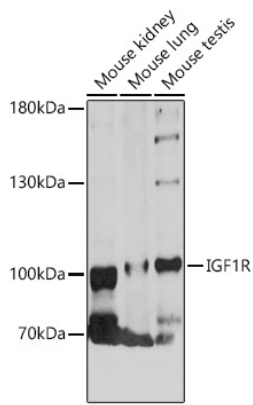
Affinity purification

Storage

Store at -20°C. Avoid freeze / thaw cycles.

Buffer: PBS with 0.01% thimerosal, 50% glycerol, pH7.3.

Validation Data



Western blot analysis of various lysates using IGF1R Rabbit pAb (A12736) at 1:1000 dilution.
Secondary antibody: HRP-conjugated Goat anti-Rabbit IgG (H+L) (AS014) at 1:10000 dilution.
Lysates/proteins: 25µg per lane.
Blocking buffer: 3% nonfat dry milk in TBST.
Detection: ECL Basic Kit (RM00020).
Exposure time: 15s.