

ACE2 Rabbit pAb

Catalog No.: A12737 **7 Publications**

Basic Information

Observed MW

100kDa

Calculated MW

92kDa

Category

Primary antibody

Applications

ELISA, WB, IHC-P, IF/ICC

Cross-Reactivity

Human, Mouse, Rat

Background

The protein encoded by this gene belongs to the angiotensin-converting enzyme family of dipeptidyl carboxypeptidases and has considerable homology to human angiotensin 1 converting enzyme. This secreted protein catalyzes the cleavage of angiotensin I into angiotensin 1-9, and angiotensin II into the vasodilator angiotensin 1-7. ACE2 is known to be expressed in various human organs, and its organ- and cell-specific expression suggests that it may play a role in the regulation of cardiovascular and renal function, as well as fertility. In addition, the encoded protein is a functional receptor for the spike glycoprotein of the human coronavirus HCoV-NL63 and the human severe acute respiratory syndrome coronaviruses, SARS-CoV and SARS-CoV-2, the latter is the causative agent of coronavirus disease-2019 (COVID-19). Multiple splice variants have been found for this gene and the dACE2 (or MIRb-ACE2) splice variant has been found to be interferon inducible.

Recommended Dilutions

WB	1:500 - 1:1000
IHC-P	1:50 - 1:200
IF/ICC	1:50 - 1:200

Immunogen Information

Gene ID

59272

Swiss Prot

Q9BYF1

Immunogen

A synthetic peptide corresponding to a sequence within amino acids 18-740 of human ACE2 (NP_068576.1).

Synonyms

ACEH; ACE2

Contact

		400-999-6126
		cn.market@abclonal.com.cn
		www.abclonal.com.cn

Product Information

Source

Rabbit

Isotype

IgG

Purification

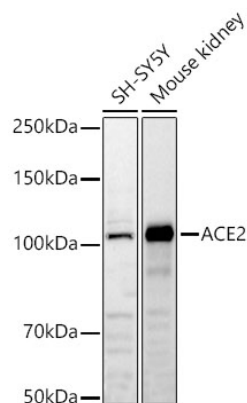
Affinity purification

Storage

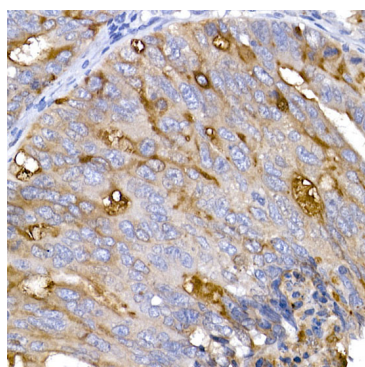
Store at -20°C. Avoid freeze / thaw cycles.

Buffer: PBS with 0.05% proclin300, 50% glycerol, pH7.3.

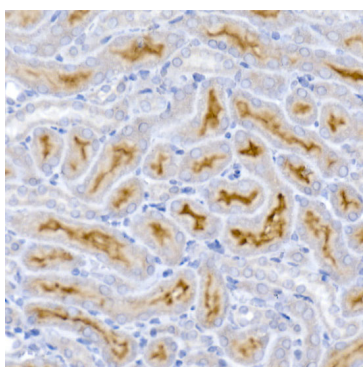
Validation Data



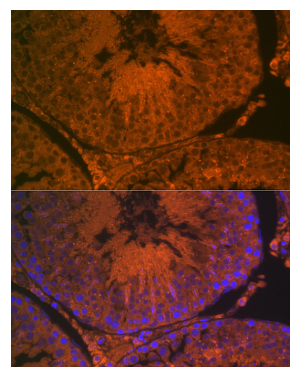
Western blot analysis of various lysates using ACE2 Rabbit pAb (A12737) at 1:1000 dilution.
 Secondary antibody: HRP Goat Anti-Rabbit IgG (H+L) (AS014) at 1:10000 dilution.
 Lysates / proteins: 25 µg per lane.
 Blocking buffer: 3 % nonfat dry milk in TBST.
 Detection: ECL Basic Kit (RM00020).
 Exposure time: 30s.



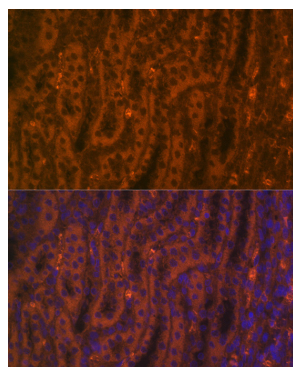
Immunohistochemistry analysis of ACE2 in paraffin-embedded human colon carcinoma using ACE2 Rabbit pAb (A12737) at dilution of 1:50 (40x lens). Perform high pressure antigen retrieval with 10 mM citrate buffer pH 6.0 before commencing with IHC staining protocol.



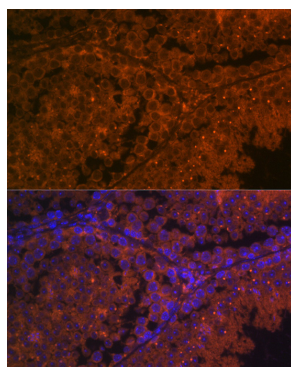
Immunohistochemistry analysis of ACE2 in paraffin-embedded mouse kidney using ACE2 Rabbit pAb (A12737) at dilution of 1:50 (40x lens). Perform high pressure antigen retrieval with 10 mM citrate buffer pH 6.0 before commencing with IHC staining protocol.



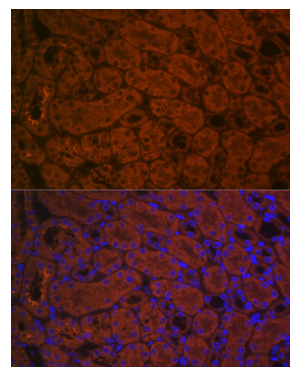
Immunofluorescence analysis of paraffin-embedded rat testis using ACE2 Rabbit pAb (A12737) at dilution of 1:100 (40x lens). Secondary antibody: Cy3 Goat Anti-Rabbit IgG (H+L) (AS007) at 1:500 dilution. Blue: DAPI for nuclear staining.



Immunofluorescence analysis of paraffin-embedded rat kidney using ACE2 Rabbit pAb (A12737) at dilution of 1:100 (40x lens). Secondary antibody: Cy3 Goat Anti-Rabbit IgG (H+L) (AS007) at 1:500 dilution. Blue: DAPI for nuclear staining.



Immunofluorescence analysis of paraffin-embedded mouse testis using ACE2 Rabbit pAb (A12737) at dilution of 1:100 (40x lens). Secondary antibody: Cy3 Goat Anti-Rabbit IgG (H+L) (AS007) at 1:500 dilution. Blue: DAPI for nuclear staining.



Immunofluorescence analysis of paraffin-embedded mouse kidney using ACE2 Rabbit pAb (A12737) at dilution of 1:100 (40x lens). Secondary antibody: Cy3 Goat Anti-Rabbit IgG (H+L) (AS007) at 1:500 dilution. Blue: DAPI for nuclear staining.