

EPB41L3 Rabbit pAb

Catalog No.: A12759

Basic Information

Observed MW

121kDa

Calculated MW

121kDa

Category

Primary antibody

Applications

ELISA, WB

Cross-Reactivity

Human, Mouse

Background

Predicted to enable cytoskeletal protein-membrane anchor activity. Predicted to be a structural constituent of cytoskeleton. Predicted to be involved in several processes, including nervous system development; paranodal junction maintenance; and protein localization to paranode region of axon. Located in cell-cell junction and plasma membrane. Biomarker of meningioma.

Recommended Dilutions

WB 1:500 - 1:2000

Immunogen Information

Gene ID

23136

Swiss Prot

Q9Y2J2

Immunogen

Recombinant fusion protein containing a sequence corresponding to amino acids 656-865 of human EPB41L3 (NP_001268463.1).

Synonyms

4.1B; DAL1; DAL-1; EPB41L3

Contact

☎ | 400-999-6126

✉ | cn.market@abclonal.com.cn

🌐 | www.abclonal.com.cn

Product Information

Source

Rabbit

Isotype

IgG

Purification

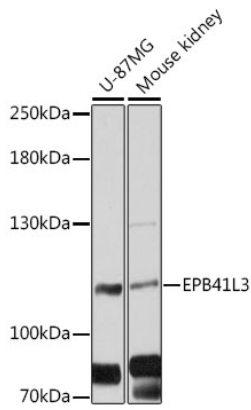
Affinity purification

Storage

Store at -20°C. Avoid freeze / thaw cycles.

Buffer: PBS with 0.01% thimerosal, 50% glycerol, pH7.3.

Validation Data



Western blot analysis of various lysates using EPB41L3 Rabbit pAb (A12759) at 1:3000 dilution.
Secondary antibody: HRP Goat Anti-Rabbit IgG (H+L) (AS014) at 1:10000 dilution.
Lysates/proteins: 25µg per lane.
Blocking buffer: 3% nonfat dry milk in TBST.
Detection: ECL Basic Kit (RM00020).
Exposure time: 30s.