

Kdm6b Rabbit pAb

Catalog No.: A12767

Basic Information

Observed MW

177kDa

Calculated MW

176kDa

Category

Primary antibody

Applications

ELISA, WB

Cross-Reactivity

Human, Mouse

Background

Enables beta-catenin binding activity; histone H3-tri/di-methyl-lysine-27 demethylase activity; and sequence-specific DNA binding activity. Involved in several processes, including histone H3-K27 demethylation; mesodermal cell differentiation; and positive regulation of cold-induced thermogenesis. Acts upstream of or within several processes, including cellular response to hydrogen peroxide; histone demethylation; and positive regulation of transcription by RNA polymerase II. Located in nucleus. Is expressed in several structures, including brain; gut; liver; metanephros; and olfactory epithelium. Orthologous to human KDM6B (lysine demethylase 6B).

Recommended Dilutions

WB 1:100 - 1:500

Immunogen Information

Gene ID

216850

Swiss Prot

Immunogen

Recombinant fusion protein containing a sequence corresponding to amino acids 90-190 of mouse Kdm6b (NP_001017426.1).

Synonyms

Jmjd3; 1700064E03Rik; Kdm6b

Contact

☎ | 400-999-6126

✉ | cn.market@abclonal.com.cn

🌐 | www.abclonal.com.cn

Product Information

Source

Rabbit

Isotype

IgG

Purification

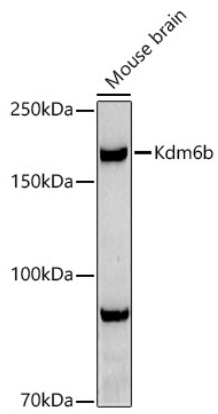
Affinity purification

Storage

Store at -20°C. Avoid freeze / thaw cycles.

Buffer: PBS with 0.05% proclin300, 50% glycerol, pH7.3.

Validation Data



Western blot analysis of extracts of Mouse brain, using Kdm6b Rabbit pAb antibody (A12767) at 1:500 dilution.

Secondary antibody: HRP Goat Anti-Rabbit IgG (H+L) (AS014) at 1:10000 dilution.

Lysates/proteins: 25µg per lane.

Blocking buffer: 3% nonfat dry milk in TBST.

Detection: ECL Basic Kit (RM00020).

Exposure time: 90s.