

# [KD Validated] Mitofusin 2 Rabbit pAb

Catalog No.: A12771SP **49 Publications**

## Basic Information

### Observed MW

80 kDa

### Calculated MW

50 kDa/86 kDa

### Category

Primary antibody

### Applications

WB,IF-P,ELISA

### Cross-Reactivity

Human, Mouse, Rat

## Background

This gene encodes a mitochondrial membrane protein that participates in mitochondrial fusion and contributes to the maintenance and operation of the mitochondrial network. This protein is involved in the regulation of vascular smooth muscle cell proliferation, and it may play a role in the pathophysiology of obesity. Mutations in this gene cause Charcot-Marie-Tooth disease type 2A2, and hereditary motor and sensory neuropathy VI, which are both disorders of the peripheral nervous system. Defects in this gene have also been associated with early-onset stroke. Two transcript variants encoding the same protein have been identified.

## Recommended Dilutions

**WB** 1:1000 - 1:2000

**IF-P** 1:100 - 1:400

**ELISA** Recommended starting concentration is 1 µg/mL. Please optimize the concentration based on your specific assay requirements. For high-ratio antibody dilutions ( $\geq 1:10000$ ) a sequential dilution method is strongly recommended to ensure measurement accuracy.

## Immunogen Information

### Gene ID

9927

### Swiss Prot

O95140

### Immunogen

This information is considered to be commercially sensitive.

### Synonyms

HSG; MARF; CMT2A; CPRP1; CMT2A2; HMSN6A; CMT2A2A; CMT2A2B; Mitofusin 2

## Product Information

### Source

Rabbit

### Isotype

IgG

### Purification

Affinity purification

### Storage

Store at -20°C. Avoid freeze / thaw cycles.

Buffer: PBS, pH 7.3, containing 50% glycerol. Preserved with Proclin300 or sodium azide.

May contain 0.05% BSA as specified on the Certificate of Analysis.

## Contact

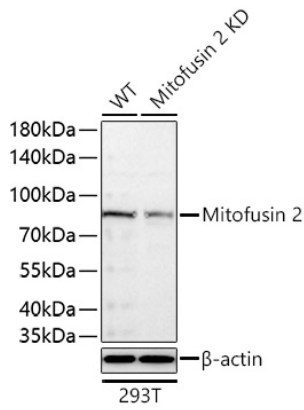
☎ | 400-999-6126

✉ | [cn.market@abclonal.com.cn](mailto:cn.market@abclonal.com.cn)

🌐 | [www.abclonal.com.cn](http://www.abclonal.com.cn)

## Validation Data

---



Western blot analysis of lysates from wild type (WT) and Mitofusin 2 knockdown (KD) 293T cells using [KD Validated] Mitofusin 2 Rabbit pAb (A12771SP) at 1:1000 dilution incubated overnight at 4°C. Secondary antibody: HRP-conjugated Goat anti-Rabbit IgG (H+L) (AS014) at 1:10000 dilution. Lysates/proteins: 25  $\mu$ g per lane. Blocking buffer: 3% nonfat dry milk in TBST. Detection: ECL Basic Kit (RM00020). Exposure time: 45 s.