

WDR81 Rabbit pAb

Catalog No.: A12780

Basic Information

Observed MW

260kDa

Calculated MW

212kDa

Category

Primary antibody

Applications

WB, ELISA

Cross-Reactivity

Human, Mouse, Rat

Background

This gene encodes a multi-domain transmembrane protein which is predominantly expressed in the brain and is thought to play a role in endolysosomal trafficking. Mutations in this gene are associated with an autosomal recessive form of a syndrome exhibiting cerebellar ataxia, cognitive disability, and disequilibrium (CAMRQ2). Alternatively spliced transcript variants encoding different isoforms have been found for this gene.

Recommended Dilutions

WB 1:500 - 1:1000

ELISA Recommended starting concentration is 1 µg/mL. Please optimize the concentration based on your specific assay requirements.

Immunogen Information

Gene ID

124997

Swiss Prot

Q562E7

Immunogen

Recombinant protein (or fragment). This information is considered to be commercially sensitive.

Synonyms

HYC3; CHMRQ; CAMRQ2; SORF-2; PPP1R166; WDR81

Contact

 | 400-999-6126

 | cn.market@abclonal.com.cn

 | www.abclonal.com.cn

Product Information

Source

Rabbit

Isotype

IgG

Purification

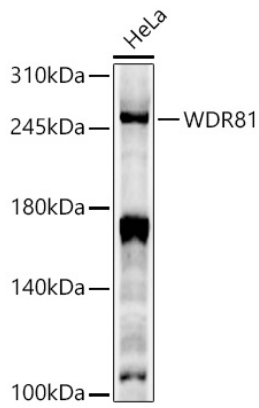
Affinity purification

Storage

Store at -20°C. Avoid freeze / thaw cycles.

Buffer: PBS containing 50% glycerol, preserved with proclin300 or sodium azide (as specified on the Certificate of Analysis), pH 7.3.

Validation Data



Western blot analysis of lysates from HeLa cells, using WDR81 Rabbit pAb (A12780) at 1:600 dilution.
Secondary antibody: HRP-conjugated Goat anti-Rabbit IgG (H+L) (AS014) at 1:10000 dilution.
Lysates/proteins: 25µg per lane.
Blocking buffer: 3% nonfat dry milk in TBST.
Detection: ECL Enhanced Kit (RM00021).
Exposure time: 180s.