

RAB7 Rabbit pAb

Catalog No.: A12784 **9 Publications**

Basic Information

Observed MW

23kDa

Calculated MW

23kDa

Category

Primary antibody

Applications

ELISA, WB, IP

Cross-Reactivity

Human, Mouse, Rat

Background

RAB family members are small, RAS-related GTP-binding proteins that are important regulators of vesicular transport. Each RAB protein targets multiple proteins that act in exocytic / endocytic pathways. This gene encodes a RAB family member that regulates vesicle traffic in the late endosomes and also from late endosomes to lysosomes. This encoded protein is also involved in the cellular vacuolation of the VacA cytotoxin of *Helicobacter pylori*. Mutations at highly conserved amino acid residues in this gene have caused some forms of Charcot-Marie-Tooth (CMT) type 2 neuropathies.

Recommended Dilutions

WB 1:500 - 1:1000

IP 0.5µg-4µg antibody for
200µg-400µg extracts of
whole cells

Immunogen Information

Gene ID

7879

Swiss Prot

P51149

Immunogen

A synthetic peptide corresponding to a sequence within amino acids 100-207 of human RAB7 (NP_004628.4).

Synonyms

RAB7; CMT2B; PRO2706

Contact

 | 400-999-6126

 | cn.market@abclonal.com.cn

 | www.abclonal.com.cn

Product Information

Source

Rabbit

Isotype

IgG

Purification

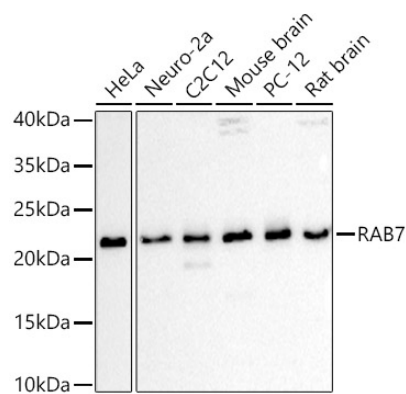
Affinity purification

Storage

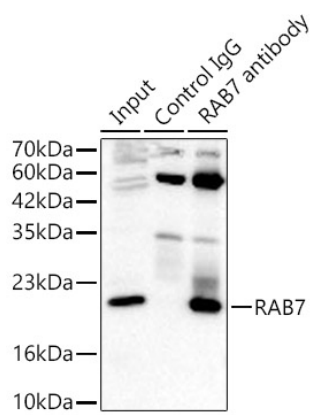
Store at -20°C. Avoid freeze / thaw cycles.

Buffer: PBS with 0.05% proclin300, 50% glycerol, pH7.3.

Validation Data



Western blot analysis of various lysates using RAB7 Rabbit pAb (A12784) at 1:1000 dilution.
Secondary antibody: HRP Goat Anti-Rabbit IgG (H+L) (AS014) at 1:10000 dilution.
Lysates/proteins: 25µg per lane.
Blocking buffer: 3% nonfat dry milk in TBST.
Detection: ECL Basic Kit (RM00020).
Exposure time: 60s.



Immunoprecipitation analysis of 300ug extracts of HeLa cells using 3ug RAB7 Rabbit pAb (A12784 1:200).
Western blot was performed from the immunoprecipitate using RAB7 Rabbit pAb (A12784) at a dilution of 1:1000.