

ITPR3 Rabbit pAb

Catalog No.: A12794 **2 Publications**

Basic Information

Observed MW

304kDa

Calculated MW

304kDa

Category

Primary antibody

Applications

WB, IF/ICC, IP, ELISA

Cross-Reactivity

Human, Mouse

Background

This gene encodes a receptor for inositol 1,4,5-trisphosphate, a second messenger that mediates the release of intracellular calcium. The receptor contains a calcium channel at the C-terminus and the ligand-binding site at the N-terminus. Knockout studies in mice suggest that type 2 and type 3 inositol 1,4,5-trisphosphate receptors play a key role in exocrine secretion underlying energy metabolism and growth.

Recommended Dilutions

WB 1:1000 - 1:5000

IF/ICC 1:50 - 1:200

IP 0.5µg-4µg antibody for
200µg-400µg extracts of
whole cells

ELISA Recommended starting
concentration is 1 µg/mL.
Please optimize the
concentration based on
your specific assay
requirements.

Immunogen Information

Gene ID

3710

Swiss Prot

Q14573

Immunogen

Recombinant protein (or fragment). This information is considered to be commercially sensitive.

Synonyms

IP3R; CMT1J; IP3R3; ITPR3

Contact

☎ | 400-999-6126

✉ | cn.market@abclonal.com.cn

🌐 | www.abclonal.com.cn

Product Information

Source

Rabbit

Isotype

IgG

Purification

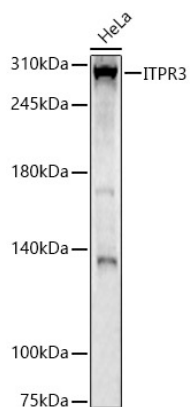
Affinity purification

Storage

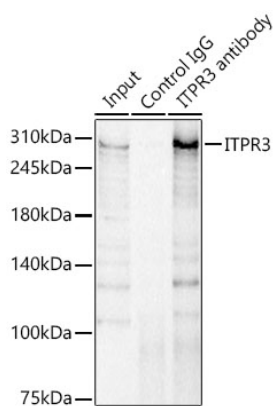
Store at -20°C. Avoid freeze / thaw cycles.

Buffer: PBS containing 50% glycerol, preserved with proclin300 or sodium azide (as specified on the Certificate of Analysis), pH 7.3.

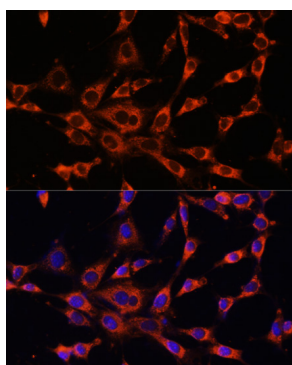
Validation Data



Western blot analysis of lysates from HeLa cells, using ITPR3 Rabbit pAb (A12794) at 1:2000 dilution. Secondary antibody: HRP-conjugated Goat anti-Rabbit IgG (H+L) (AS014) at 1:10000 dilution. Lysates/proteins: 25µg per lane. Blocking buffer: 3% nonfat dry milk in TBST. Detection: ECL Basic Kit (RM00020). Exposure time: 90s.



Immunoprecipitation analysis of 300 µg extracts of HeLa cells using 3 µg ITPR3 antibody (A12794). Western blot was performed from the immunoprecipitate using ITPR3 antibody (A12794) at a dilution of 1:1000.



Immunofluorescence analysis of NIH-3T3 cells using ITPR3 Rabbit pAb (A12794) at dilution of 1:100. Secondary antibody: Cy3-conjugated Goat anti-Rabbit IgG (H+L) (AS007) at 1:500 dilution. Blue: DAPI for nuclear staining.