

# Insulin Receptor R Rabbit mAb

Catalog No.: A1280 **Recombinant** **1 Publications**

## Basic Information

### Observed MW

144kDa

### Calculated MW

144kDa

### Category

Primary antibody

### Applications

WB

### Cross-Reactivity

Rat

## Background

Enables transmembrane receptor protein tyrosine kinase activity. Involved in actin cytoskeleton reorganization; cellular response to alkaline pH; and protein autophosphorylation. Part of receptor complex.

## Recommended Dilutions

WB 1:500 - 1:2000

## Immunogen Information

### Gene ID

3645

### Swiss Prot

P14616

### Immunogen

A synthesized peptide derived from human Insulin Receptor R

### Synonyms

IRR; Insulin Receptor R

## Contact

 | 400-999-6126

 | [cn.market@abclonal.com.cn](mailto:cn.market@abclonal.com.cn)

 | [www.abclonal.com.cn](http://www.abclonal.com.cn)

## Product Information

### Source

Rabbit

### Isotype

IgG

### Purification

Affinity purification

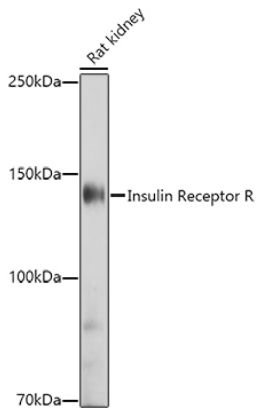
### Storage

Store at -20°C. Avoid freeze / thaw cycles.

Buffer: PBS with 0.02% sodium azide, 0.05% BSA, 50% glycerol, pH7.3.

## Validation Data

---



Western blot analysis of extracts of Rat kidney, using (A1280) at 1:1000 dilution.  
Secondary antibody: HRP Goat Anti-Rabbit IgG (H+L) (AS014) at 1:10000 dilution.  
Lysates/proteins: 25ug per lane.  
Blocking buffer: 3% nonfat dry milk in TBST.  
Detection: ECL Basic Kit (RM00020).  
Exposure time: 180s.