

# FEM1B Rabbit pAb

Catalog No.: A12802 **2 Publications**

## Basic Information

### Observed MW

75kDa

### Calculated MW

70kDa

### Category

Primary antibody

### Applications

ELISA, WB

### Cross-Reactivity

Human

## Background

This gene encodes an ankyrin repeat protein that belongs to the death receptor-associated family of proteins and plays a role in mediating apoptosis. The encoded protein is also thought to function in the replication stress-induced checkpoint signaling pathway via interaction with checkpoint kinase 1.

## Recommended Dilutions

WB 1:500 - 1:1000

## Immunogen Information

### Gene ID

10116

### Swiss Prot

Q9UK73

### Immunogen

Recombinant fusion protein containing a sequence corresponding to amino acids 368-627 of human FEM1B (NP\_056137.1).

### Synonyms

F1AA; F1A-ALPHA; FEM1-beta; FEM1B

## Contact

 | 400-999-6126

 | [cn.market@abclonal.com.cn](mailto:cn.market@abclonal.com.cn)

 | [www.abclonal.com.cn](http://www.abclonal.com.cn)

## Product Information

### Source

Rabbit

### Isotype

IgG

### Purification

Affinity purification

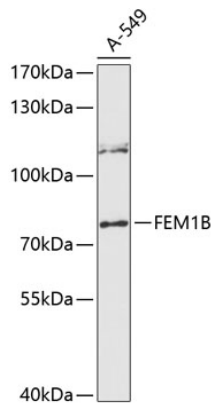
### Storage

Store at -20°C. Avoid freeze / thaw cycles.

Buffer: PBS with 0.01% thimerosal, 50% glycerol, pH7.3.

## Validation Data

---



Western blot analysis of lysates from A-549 cells, using FEM1B Rabbit pAb (A12802) at 1:3000 dilution.  
Secondary antibody: HRP-conjugated Goat anti-Rabbit IgG (H+L) (AS014) at 1:10000 dilution.  
Lysates/proteins: 25µg per lane.  
Blocking buffer: 3% nonfat dry milk in TBST.  
Detection: ECL Enhanced Kit (RM00021).  
Exposure time: 90s.