

# SNX13 Rabbit pAb

**Catalog No.: A12821**

## Basic Information

### Observed MW

112kDa

### Calculated MW

112kDa

### Category

Primary antibody

### Applications

ELISA,WB,IF/ICC

### Cross-Reactivity

Human, Mouse

## Background

This gene encodes a PHOX domain- and RGS domain-containing protein that belongs to the sorting nexin (SNX) family and the regulator of G protein signaling (RGS) family. The PHOX domain is a phosphoinositide binding domain, and the SNX family members are involved in intracellular trafficking. The RGS family members are regulatory molecules that act as GTPase activating proteins for G alpha subunits of heterotrimeric G proteins. The RGS domain of this protein interacts with G alpha(s), accelerates its GTP hydrolysis, and attenuates G alpha(s)-mediated signaling. Overexpression of this protein delays lysosomal degradation of the epidermal growth factor receptor. Because of its bifunctional role, this protein may link heterotrimeric G protein signaling and vesicular trafficking.

## Recommended Dilutions

<b>WB</b>	1:500 - 1:2000
<b>IF/ICC</b>	1:50 - 1:200

## Immunogen Information

### Gene ID

23161

### Swiss Prot

Q9Y5W8

### Immunogen

Recombinant fusion protein containing a sequence corresponding to amino acids 50-230 of human SNX13 (NP\_055947.1).

### Synonyms

RGS-PX1; SNX13

## Contact

☎ | 400-999-6126

✉ | [cn.market@abclonal.com.cn](mailto:cn.market@abclonal.com.cn)

🌐 | [www.abclonal.com.cn](http://www.abclonal.com.cn)

## Product Information

### Source

Rabbit

### Isotype

IgG

### Purification

Affinity purification

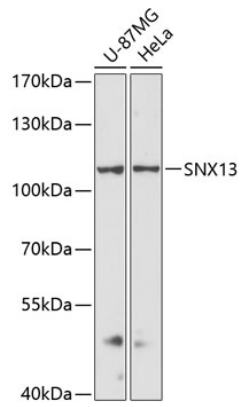
### Storage

Store at -20°C. Avoid freeze / thaw cycles.

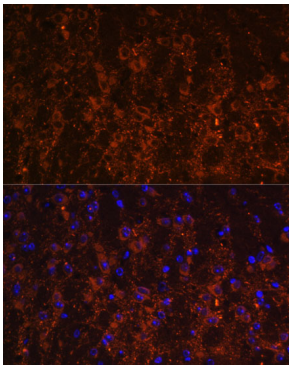
Buffer: PBS with 0.01% thimerosal, 50% glycerol, pH7.3.

## Validation Data

---



Western blot analysis of various lysates using SNX13 Rabbit pAb (A12821) at 1:3000 dilution.  
Secondary antibody: HRP Goat Anti-Rabbit IgG (H+L) (AS014) at 1:10000 dilution.  
Lysates/proteins: 25µg per lane.  
Blocking buffer: 3% nonfat dry milk in TBST.  
Detection: ECL Basic Kit (RM00020).  
Exposure time: 90s.



Immunofluorescence analysis of paraffin-embedded mouse brain using SNX13 Rabbit pAb (A12821) at dilution of 1:100. Secondary antibody: Cy3 Goat Anti-Rabbit IgG (H+L) (AS007) at 1:500 dilution. Blue: DAPI for nuclear staining.