

TCL1B Rabbit pAb

Catalog No.: A12822

Basic Information

Observed MW

16kDa

Calculated MW

15kDa

Category

Primary antibody

Applications

ELISA, WB

Cross-Reactivity

Human, Mouse, Rat

Background

Enables protein kinase binding activity and protein serine/threonine kinase activator activity. Involved in positive regulation of peptidyl-serine phosphorylation and positive regulation of protein serine/threonine kinase activity. Part of protein-containing complex.

Recommended Dilutions

WB 1:500 - 1:1000

Immunogen Information

Gene ID

9623

Swiss Prot

O95988

Immunogen

Recombinant fusion protein containing a sequence corresponding to amino acids 1-128 of human TCL1B (NP_004909.1).

Synonyms

TML1; SYN-1; TCL1B

Contact

☎ | 400-999-6126

✉ | cn.market@abclonal.com.cn

🌐 | www.abclonal.com.cn

Product Information

Source

Rabbit

Isotype

IgG

Purification

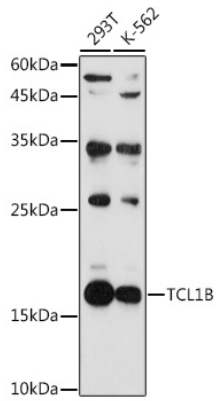
Affinity purification

Storage

Store at -20°C. Avoid freeze / thaw cycles.

Buffer: PBS with 0.01% thimerosal, 50% glycerol, pH7.3.

Validation Data



Western blot analysis of various lysates using TCL1B Rabbit pAb (A12822) at 1:1000 dilution.
Secondary antibody: HRP Goat Anti-Rabbit IgG (H+L) (AS014) at 1:10000 dilution.
Lysates/proteins: 25µg per lane.
Blocking buffer: 3% nonfat dry milk in TBST.
Detection: ECL Basic Kit (RM00020).
Exposure time: 90s.