

# FAM62B Rabbit pAb

Catalog No.: A12833

## Basic Information

### Observed MW

102kDa

### Calculated MW

102kDa

### Category

Primary antibody

### Applications

ELISA, WB

### Cross-Reactivity

Human, Mouse

## Background

Enables calcium ion binding activity; identical protein binding activity; and phospholipid binding activity. Predicted to be involved in endocytosis; endoplasmic reticulum-plasma membrane tethering; and lipid transport. Located in endoplasmic reticulum-plasma membrane contact site. Is extrinsic component of cytoplasmic side of plasma membrane; integral component of plasma membrane; and intrinsic component of endoplasmic reticulum membrane.

## Recommended Dilutions

WB 1:500 - 1:2000

## Immunogen Information

### Gene ID

57488

### Swiss Prot

A0FGR8

### Immunogen

Recombinant fusion protein containing a sequence corresponding to amino acids 630-760 of human FAM62B (NP\_065779.1).

### Synonyms

E-Syt2; FAM62B; CHR2SYT

## Contact

☎ | 400-999-6126

✉ | [cn.market@abclonal.com.cn](mailto:cn.market@abclonal.com.cn)

🌐 | [www.abclonal.com.cn](http://www.abclonal.com.cn)

## Product Information

### Source

Rabbit

### Isotype

IgG

### Purification

Affinity purification

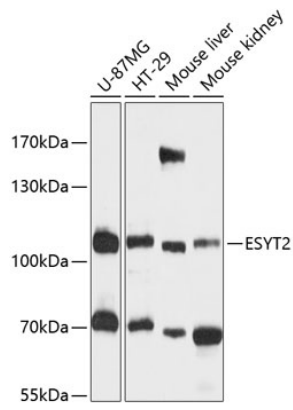
### Storage

Store at -20°C. Avoid freeze / thaw cycles.

Buffer: PBS with 0.01% thimerosal, 50% glycerol, pH7.3.

## Validation Data

---



Western blot analysis of various lysates using FAM62B Rabbit pAb (A12833) at 1:3000 dilution.  
Secondary antibody: HRP Goat Anti-Rabbit IgG (H+L) (AS014) at 1:10000 dilution.  
Lysates/proteins: 25µg per lane.  
Blocking buffer: 3% nonfat dry milk in TBST.  
Detection: ECL Basic Kit (RM00020).  
Exposure time: 5s.