

# CoREST/RCOR1 Rabbit pAb

Catalog No.: A12845

## Basic Information

### Observed MW

60kDa

### Calculated MW

53kDa

### Category

Primary antibody

### Applications

WB,IF/ICC,IP,ELISA,ChIP

### Cross-Reactivity

Human, Mouse

## Background

This gene encodes a protein that is well-conserved, downregulated at birth, and with a specific role in determining neural cell differentiation. The encoded protein binds to the C-terminal domain of REST (repressor element-1 silencing transcription factor).

## Recommended Dilutions

**WB** 1:500 - 1:2000

**IF/ICC** 1:50 - 1:200

**IP** 0.5µg-4µg antibody for  
200µg-400µg extracts of  
whole cells

**ELISA** Recommended starting  
concentration is 1 µg/mL.  
Please optimize the  
concentration based on  
your specific assay  
requirements.

**ChIP** 5µg antibody for  
10µg-15µg of Chromatin

## Contact

 | 400-999-6126

 | [cn.market@abclonal.com.cn](mailto:cn.market@abclonal.com.cn)

## Immunogen Information

### Gene ID

23186

### Swiss Prot

Q9UKLO

### Immunogen

Recombinant fusion protein containing a sequence corresponding to amino acids 256-485 of human CoREST/CoREST/RCOR1 (NP\_055971.2).

### Synonyms

RCOR; COREST; CoREST/RCOR1

## Product Information

### Source

Rabbit

### Isotype

IgG

### Purification

Affinity purification

### Storage

Store at -20°C. Avoid freeze / thaw cycles.

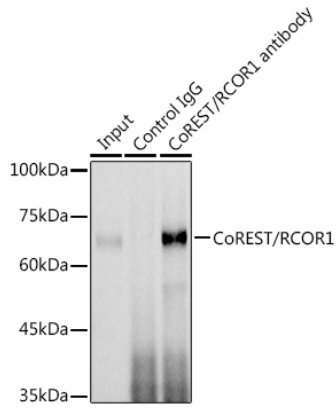
Buffer: PBS with 0.01% thimerosal, 50% glycerol, pH7.3.



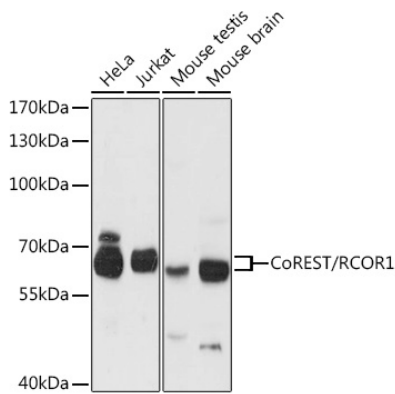
| [www.abclonal.com.cn](http://www.abclonal.com.cn)

---

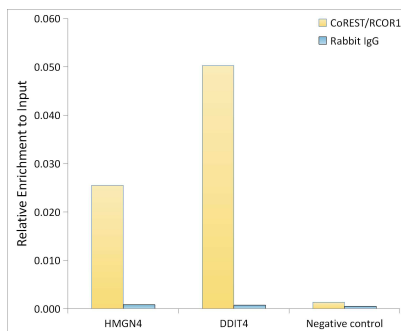
## Validation Data



Immunoprecipitation analysis of 300 µg extracts of Jurkat cells using 3 µg CoREST/RCOR1 antibody (A12845). Western blot was performed from the immunoprecipitate using CoREST/RCOR1 antibody (A12845) at a dilution of 1:1000.



Western blot analysis of various lysates using CoREST/RCOR1 Rabbit pAb (A12845) at 1:3000 dilution. Secondary antibody: HRP-conjugated Goat anti-Rabbit IgG (H+L) (AS014) at 1:10000 dilution. Lysates/proteins: 25µg per lane. Blocking buffer: 3% nonfat dry milk in TBST. Detection: ECL Basic Kit (RM00020). Exposure time: 30s.



Chromatin immunoprecipitation analysis of extracts of HepG2 cells, using CoREST/RCOR1 antibody (A12845) and rabbit IgG. The amount of immunoprecipitated DNA was checked by quantitative PCR. Histogram was constructed by the ratios of the immunoprecipitated DNA to the input.