

SLC27A1 Rabbit pAb

Catalog No.: A12847 **4 Publications**

Basic Information

Observed MW

71kDa

Calculated MW

71kDa

Category

Primary antibody

Applications

WB,IF/ICC,ELISA

Cross-Reactivity

Human, Mouse, Rat

Background

Enables biotin transmembrane transporter activity; efflux transmembrane transporter activity; and long-chain fatty acid transporter activity. Involved in several processes, including carboxylic acid transmembrane transport; glycerophospholipid biosynthetic process; and lipid transport across blood-brain barrier. Located in membrane. Part of plasma membrane.

Recommended Dilutions

WB 1:1000 - 1:2000

IF/ICC 1:50 - 1:200

ELISA Recommended starting concentration is 1 µg/mL. Please optimize the concentration based on your specific assay requirements.

Immunogen Information

Gene ID

376497

Swiss Prot

Q6PCB7

Immunogen

Recombinant fusion protein containing a sequence corresponding to amino acids 510-646 of human SLC27A1 (NP_940982.1).

Synonyms

FATP; FATP1; ACSVL5; FATP-1; SLC27A1

Contact

 | 400-999-6126

 | cn.market@abclonal.com.cn

 | www.abclonal.com.cn

Product Information

Source

Rabbit

Isotype

IgG

Purification

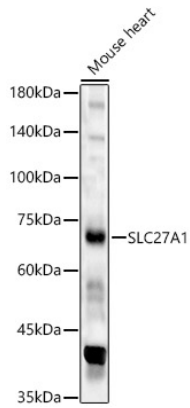
Affinity purification

Storage

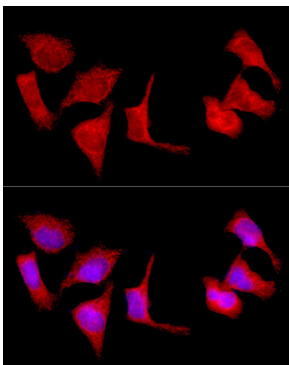
Store at -20°C. Avoid freeze / thaw cycles.

Buffer: PBS with 0.09% Sodium azide,50% glycerol,pH7.3.

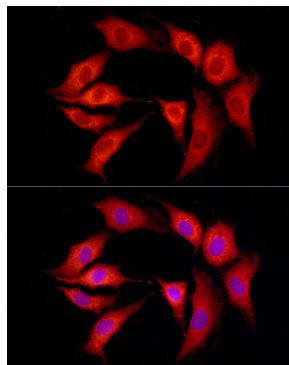
Validation Data



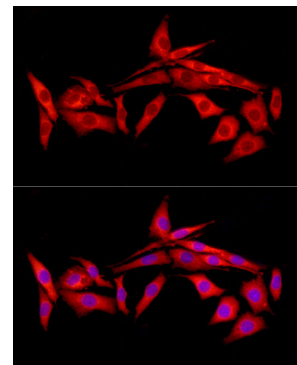
Western blot analysis of lysates from Mouse heart, using SLC27A1 Rabbit pAb (A12847) at 1:1000 dilution. Secondary antibody: HRP-conjugated Goat anti-Rabbit IgG (H+L) (AS014) at 1:10000 dilution. Lysates/proteins: 25µg per lane. Blocking buffer: 3% nonfat dry milk in TBST. Detection: ECL Basic Kit (RM00020). Exposure time: 120s.



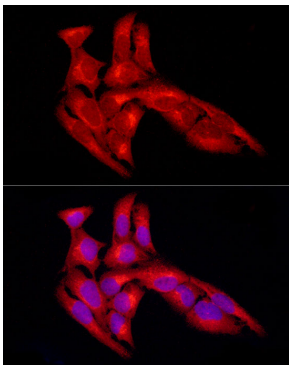
Immunofluorescence analysis of HeLa cells using SLC27A1 Rabbit pAb (A12847) at dilution of 1:100 (40x lens). Secondary antibody: Cy3-conjugated Goat anti-Rabbit IgG (H+L) (AS007) at 1:500 dilution. Blue: DAPI for nuclear staining.



Immunofluorescence analysis of NIH/3T3 cells using SLC27A1 Rabbit pAb (A12847) at dilution of 1:100 (40x lens). Secondary antibody: Cy3-conjugated Goat anti-Rabbit IgG (H+L) (AS007) at 1:500 dilution. Blue: DAPI for nuclear staining.



Immunofluorescence analysis of PC-12 cells using SLC27A1 Rabbit pAb (A12847) at dilution of 1:100 (40x lens). Secondary antibody: Cy3-conjugated Goat anti-Rabbit IgG (H+L) (AS007) at 1:500 dilution. Blue: DAPI for nuclear staining.



Immunofluorescence analysis of U2OS cells using SLC27A1 Rabbit pAb (A12847) at dilution of 1:100 (40x lens). Secondary antibody: Cy3-conjugated Goat anti-Rabbit IgG (H+L) (AS007) at 1:500 dilution. Blue: DAPI for nuclear staining.