

# CRYZ Rabbit pAb

**Catalog No.: A12857**

## Basic Information

**Observed MW**

37kDa

**Calculated MW**

35kDa

**Category**

Primary antibody

**Applications**

ELISA,WB,IF/ICC

**Cross-Reactivity**

Human, Mouse, Rat

## Background

Crystallins are separated into two classes: taxon-specific, or enzyme, and ubiquitous. The latter class constitutes the major proteins of vertebrate eye lens and maintains the transparency and refractive index of the lens. The former class is also called phylogenetically-restricted crystallins. This gene encodes a taxon-specific crystallin protein which has NADPH-dependent quinone reductase activity distinct from other known quinone reductases. It lacks alcohol dehydrogenase activity although by similarity it is considered a member of the zinc-containing alcohol dehydrogenase family. Unlike other mammalian species, in humans, lens expression is low. Alternatively spliced transcript variants encoding different isoforms have been found for this gene. One pseudogene is known to exist.

## Recommended Dilutions

**WB** 1:500 - 1:2000**IF/ICC** 1:50 - 1:200

## Immunogen Information

**Gene ID**

1429

**Swiss Prot**

Q08257

**Immunogen**

Recombinant fusion protein containing a sequence corresponding to amino acids 1-329 of human CRYZ (NP\_001123514.1).

**Synonyms**

CRYZ

## Contact

 | 400-999-6126 | [cn.market@abclonal.com.cn](mailto:cn.market@abclonal.com.cn) | [www.abclonal.com.cn](http://www.abclonal.com.cn)

## Product Information

**Source**

Rabbit

**Isotype**

IgG

**Purification**

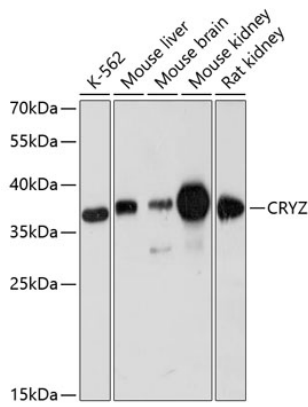
Affinity purification

**Storage**

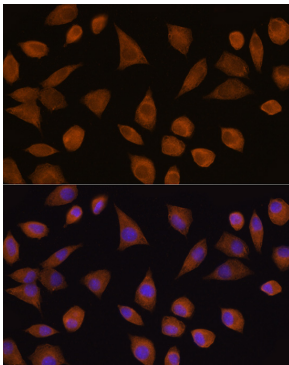
Store at -20°C. Avoid freeze / thaw cycles.

Buffer: PBS with 0.01% thimerosal,50% glycerol,pH7.3.

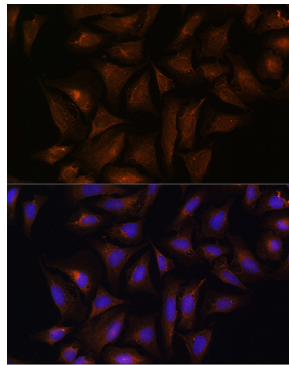
## Validation Data



Western blot analysis of various lysates using CRYZ Rabbit pAb (A12857) at 1:3000 dilution. Secondary antibody: HRP Goat Anti-Rabbit IgG (H+L) (AS014) at 1:10000 dilution. Lysates/proteins: 25µg per lane. Blocking buffer: 3% nonfat dry milk in TBST. Detection: ECL Basic Kit (RM00020). Exposure time: 30s.



Immunofluorescence analysis of L929 cells using CRYZ Rabbit pAb (A12857) at dilution of 1:100 (40x lens). Secondary antibody: Cy3 Goat Anti-Rabbit IgG (H+L) (AS007) at 1:500 dilution. Blue: DAPI for nuclear staining.



Immunofluorescence analysis of U-2 OS cells using CRYZ Rabbit pAb (A12857) at dilution of 1:100 (40x lens). Secondary antibody: Cy3 Goat Anti-Rabbit IgG (H+L) (AS007) at 1:500 dilution. Blue: DAPI for nuclear staining.