

SLC17A7 Rabbit pAb

Catalog No.: A12879 **2 Publications**

Basic Information

Observed MW

62kDa

Calculated MW

62kDa

Category

Primary antibody

Applications

WB,IF/ICC,IF-P,ELISA

Cross-Reactivity

Human, Mouse

Background

The protein encoded by this gene is a vesicle-bound, sodium-dependent phosphate transporter that is specifically expressed in the neuron-rich regions of the brain. It is preferentially associated with the membranes of synaptic vesicles and functions in glutamate transport. The protein shares 82% identity with the differentiation-associated Na-dependent inorganic phosphate cotransporter and they appear to form a distinct class within the Na⁺/Pi cotransporter family.

Recommended Dilutions

WB 1:500 - 1:1000

IF/ICC 1:50 - 1:200

IF-P 1:50 - 1:200

ELISA Recommended starting concentration is 1 µg/mL. Please optimize the concentration based on your specific assay requirements.

Immunogen Information

Gene ID

57030

Swiss Prot

Q9P2U7

Immunogen

Recombinant protein (or fragment). This information is considered to be commercially sensitive.

Synonyms

BNPI; VGLUT1; SLC17A7

Contact

☎ | 400-999-6126

✉ | cn.market@abclonal.com.cn

🌐 | www.abclonal.com.cn

Product Information

Source

Rabbit

Isotype

IgG

Purification

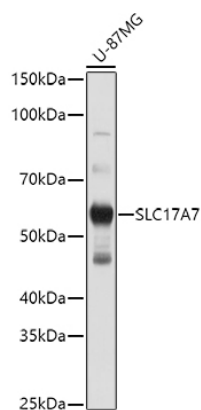
Affinity purification

Storage

Store at -20°C. Avoid freeze / thaw cycles.

Buffer: PBS with 0.05% proclin300, 50% glycerol, pH7.3.

Validation Data



Western blot analysis of lysates from U-87MG cells, using SLC17A7 Rabbit pAb (A12879) at 1:1000 dilution.

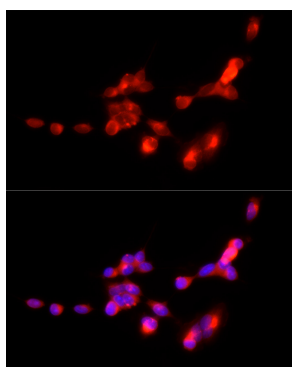
Secondary antibody: HRP-conjugated Goat anti-Rabbit IgG (H+L) (AS014) at 1:10000 dilution.

Lysates/proteins: 25µg per lane.

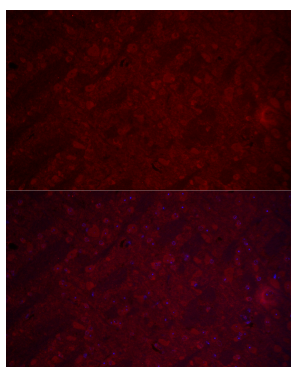
Blocking buffer: 3% nonfat dry milk in TBST.

Detection: ECL Basic Kit (RM00020).

Exposure time: 10s.



Immunofluorescence analysis of SH-SY5Y cells using SLC17A7 Rabbit pAb (A12879) at dilution of 1:200 (40x lens). Secondary antibody: Cy3-conjugated Goat anti-Rabbit IgG (H+L) (AS007) at 1:500 dilution. Blue: DAPI for nuclear staining.



Immunofluorescence analysis of paraffin-embedded mouse brain using SLC17A7 Rabbit pAb (A12879) at dilution of 1:200 (40x lens). Secondary antibody: Cy3-conjugated Goat anti-Rabbit IgG (H+L) (AS007) at 1:500 dilution. Blue: DAPI for nuclear staining.