

SYNPO2 Rabbit pAb

Catalog No.: A12881

Basic Information

Observed MW

117kDa

Calculated MW

118kDa

Category

Primary antibody

Applications

ELISA, WB

Cross-Reactivity

Mouse

Background

Enables alpha-actinin binding activity and filamin binding activity. Involved in positive regulation of actin filament bundle assembly; positive regulation of cell migration; and regulation of Rho-dependent protein serine/threonine kinase activity. Located in several cellular components, including Z disc; focal adhesion; and stress fiber.

Recommended Dilutions

WB 1:500 - 1:1000

Immunogen Information

Gene ID

171024

Swiss Prot

Q9UMS6

Immunogen

Recombinant fusion protein containing a sequence corresponding to amino acids 1-300 of human SYNPO2 (NP_597734.2).

Synonyms

SYISL; SYNPO2

Contact

☎ | 400-999-6126

✉ | cn.market@abclonal.com.cn

🌐 | www.abclonal.com.cn

Product Information

Source

Rabbit

Isotype

IgG

Purification

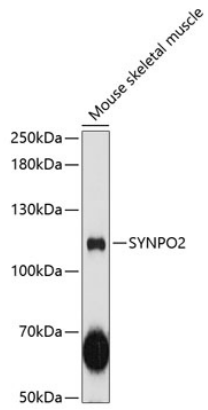
Affinity purification

Storage

Store at -20°C. Avoid freeze / thaw cycles.

Buffer: PBS with 0.01% thimerosal, 50% glycerol, pH7.3.

Validation Data



Western blot analysis of lysates from mouse skeletal muscle, using SYNPO2 Rabbit pAb (A12881) at 1:3000 dilution.
Secondary antibody: HRP Goat Anti-Rabbit IgG (H+L) (AS014) at 1:10000 dilution.
Lysates/proteins: 25µg per lane.
Blocking buffer: 3% nonfat dry milk in TBST.
Detection: ECL Enhanced Kit (RM00021).
Exposure time: 90s.