

FCER1G Rabbit pAb

Catalog No.: A12889 **2 Publications**

Basic Information

Observed MW

12kDa

Calculated MW

10kDa

Category

Primary antibody

Applications

ELISA, WB

Cross-Reactivity

Mouse, Rat

Background

The high affinity IgE receptor is a key molecule involved in allergic reactions. It is a tetramer composed of 1 alpha, 1 beta, and 2 gamma chains. The gamma chains are also subunits of other Fc receptors.

Recommended Dilutions

WB 1:1000 - 1:2000

Immunogen Information

Gene ID

2207

Swiss Prot

P30273

Immunogen

Recombinant fusion protein containing a sequence corresponding to amino acids 19-86 of human FCER1G (NP_004097.1).

Synonyms

FCRG; FCER1G

Contact

 | 400-999-6126

 | cn.market@abclonal.com.cn

 | www.abclonal.com.cn

Product Information

Source

Rabbit

Isotype

IgG

Purification

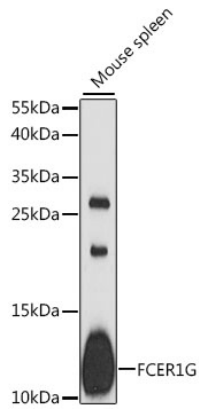
Affinity purification

Storage

Store at -20°C. Avoid freeze / thaw cycles.

Buffer: PBS with 0.01% thimerosal, 50% glycerol, pH7.3.

Validation Data



Western blot analysis of lysates from mouse spleen, using FCER1G Rabbit pAb (A12889) at 1:1000 dilution.

Secondary antibody: HRP Goat Anti-Rabbit IgG (H+L) (AS014) at 1:10000 dilution.

Lysates/proteins: 25µg per lane.

Blocking buffer: 3% nonfat dry milk in TBST.

Detection: ECL Basic Kit (RM00020).

Exposure time: 90s.