

PALD1 Rabbit pAb

Catalog No.: A12893

Basic Information

Observed MW

97kDa

Calculated MW

97kDa

Category

Primary antibody

Applications

ELISA, WB, IF/ICC

Cross-Reactivity

Human, Mouse, Rat

Background

Predicted to enable protein tyrosine phosphatase activity. Predicted to be involved in peptidyl-tyrosine dephosphorylation. Located in cytosol.

Recommended Dilutions

WB	1:500 - 1:2000
IF/ICC	1:50 - 1:100

Immunogen Information

Gene ID

27143

Swiss Prot

Q9ULE6

Immunogen

Recombinant fusion protein containing a sequence corresponding to amino acids 1-300 of human PALD1 (NP_055246.2).

Synonyms

PALD; KIAA1274; PALD1

Contact

☎ | 400-999-6126

✉ | cn.market@abclonal.com.cn

🌐 | www.abclonal.com.cn

Product Information

Source

Rabbit

Isotype

IgG

Purification

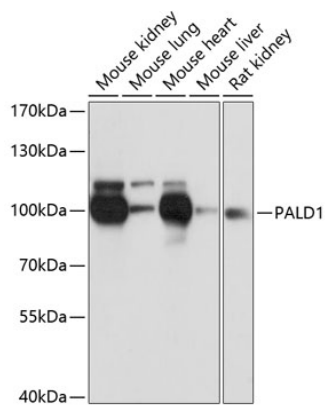
Affinity purification

Storage

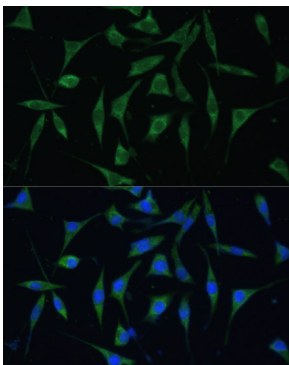
Store at -20°C. Avoid freeze / thaw cycles.

Buffer: PBS with 0.01% thimerosal, 50% glycerol, pH7.3.

Validation Data



Western blot analysis of various lysates using PALD1 Rabbit pAb (A12893) at 1:3000 dilution.
Secondary antibody: HRP Goat Anti-Rabbit IgG (H+L) (AS014) at 1:10000 dilution.
Lysates/proteins: 25µg per lane.
Blocking buffer: 3% nonfat dry milk in TBST.
Detection: ECL Basic Kit (RM00020).
Exposure time: 1s.



Immunofluorescence analysis of L929 cells using PALD1 Rabbit pAb (A12893) at dilution of 1:100 (40x lens). Secondary antibody: Cy3 Goat Anti-Rabbit IgG (H+L) (AS007) at 1:500 dilution. Blue: DAPI for nuclear staining.