

# PARP8 Rabbit pAb

Catalog No.: A12894

## Basic Information

### Observed MW

96kDa

### Calculated MW

96kDa

### Category

Primary antibody

### Applications

ELISA, WB, IHC-P

### Cross-Reactivity

Human, Mouse, Rat

## Background

Enables protein ADP-ribosylase activity. Involved in protein auto-ADP-ribosylation and protein mono-ADP-ribosylation.

## Recommended Dilutions

WB 1:500 - 1:2000

IHC-P 1:50 - 1:200

## Immunogen Information

### Gene ID

79668

### Swiss Prot

Q8N3A8

### Immunogen

Recombinant fusion protein containing a sequence corresponding to amino acids 1-300 of human PARP8 (NP\_001171527.1).

### Synonyms

ARTD16; pART16; PARP8

## Contact

☎ | 400-999-6126

✉ | [cn.market@abclonal.com.cn](mailto:cn.market@abclonal.com.cn)

🌐 | [www.abclonal.com.cn](http://www.abclonal.com.cn)

## Product Information

### Source

Rabbit

### Isotype

IgG

### Purification

Affinity purification

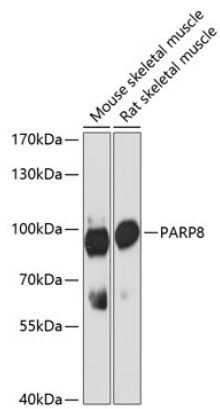
### Storage

Store at -20°C. Avoid freeze / thaw cycles.

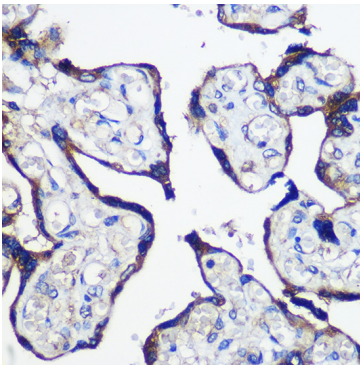
Buffer: PBS with 0.01% thimerosal, 50% glycerol, pH7.3.

## Validation Data

---



Western blot analysis of various lysates using PARP8 Rabbit pAb (A12894) at 1:3000 dilution.  
Secondary antibody: HRP Goat Anti-Rabbit IgG (H+L) (AS014) at 1:10000 dilution.  
Lysates/proteins: 25µg per lane.  
Blocking buffer: 3% nonfat dry milk in TBST.  
Detection: ECL Basic Kit (RM00020).  
Exposure time: 90s.



Immunohistochemistry analysis of paraffin-embedded Human placenta using PARP8 Rabbit pAb (A12894) at dilution of 1:100 (40x lens). Perform microwave antigen retrieval with 10 mM PBS buffer pH 7.2 before commencing with IHC staining protocol.