

# PLCH1 Rabbit pAb

Catalog No.: A12903

## Basic Information

### Observed MW

175kDa

### Calculated MW

189kDa

### Category

Primary antibody

### Applications

ELISA, WB

### Cross-Reactivity

Rat

## Background

PLCH1 is a member of the PLC-eta family of the phosphoinositide-specific phospholipase C (PLC) superfamily of enzymes that cleave phosphatidylinositol 4,5-bisphosphate (PtdIns(4,5)P<sub>2</sub>) to generate second messengers inositol 1,4,5-trisphosphate (IP<sub>3</sub>) and diacylglycerol (DAG) (Hwang et al., 2005 [PubMed 15702972]).

## Recommended Dilutions

WB 1:1000 - 1:3000

## Immunogen Information

### Gene ID

23007

### Swiss Prot

Q4KWH8

### Immunogen

Recombinant fusion protein containing a sequence corresponding to amino acids 1100-1400 of human PLCH1 (NP\_055811.1).

### Synonyms

HPE14; PLCL3; PLC-L3; PLC eta 1; PLCH1

## Contact

☎ | 400-999-6126

✉ | [cn.market@abclonal.com.cn](mailto:cn.market@abclonal.com.cn)

🌐 | [www.abclonal.com.cn](http://www.abclonal.com.cn)

## Product Information

### Source

Rabbit

### Isotype

IgG

### Purification

Affinity purification

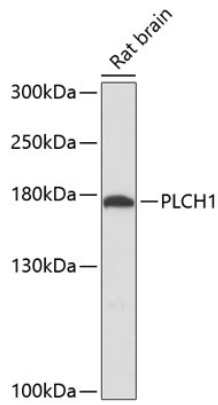
### Storage

Store at -20°C. Avoid freeze / thaw cycles.

Buffer: PBS with 0.01% thimerosal, 50% glycerol, pH 7.3.

## Validation Data

---



Western blot analysis of lysates from rat brain, using PLCH1 Rabbit pAb (A12903) at 1:3000 dilution.  
Secondary antibody: HRP Goat Anti-Rabbit IgG (H+L) (AS014) at 1:10000 dilution.  
Lysates/proteins: 25µg per lane.  
Blocking buffer: 3% nonfat dry milk in TBST.  
Detection: ECL Basic Kit (RM00020).  
Exposure time: 90s.