

MCM8 Rabbit pAb

Catalog No.: A12922

Basic Information

Observed MW

110kDa

Calculated MW

94kDa

Category

Primary antibody

Applications

ELISA, WB

Cross-Reactivity

Human

Background

The protein encoded by this gene is one of the highly conserved mini-chromosome maintenance proteins (MCM) that are essential for the initiation of eukaryotic genome replication. The hexameric protein complex formed by the mini-chromosome maintenance proteins is a key component of the pre-replication complex and may be involved in the formation of replication forks and in the recruitment of other DNA replication related proteins. This protein contains the central domain that is conserved among the mini-chromosome maintenance proteins. The encoded protein may interact with other mini-chromosome maintenance proteins and play a role in DNA replication. This gene may be associated with length of reproductive lifespan and menopause. Alternatively spliced transcript variants encoding distinct isoforms have been described.

Recommended Dilutions

WB 1:500 - 1:2000

Immunogen Information

Gene ID

84515

Swiss Prot

Q9UJA3

Immunogen

Recombinant fusion protein containing a sequence corresponding to amino acids 591-840 of human MCM8 (NP_115874.3).

Synonyms

POF10; C20orf154; dj967N21.5; MCM8

Contact

 | 400-999-6126

 | cn.market@abclonal.com.cn

 | www.abclonal.com.cn

Product Information

Source

Rabbit

Isotype

IgG

Purification

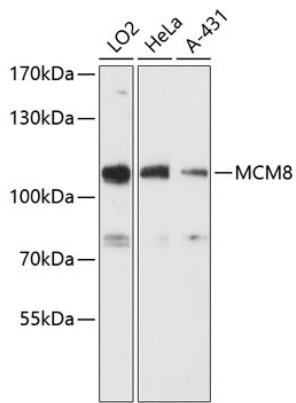
Affinity purification

Storage

Store at -20°C. Avoid freeze / thaw cycles.

Buffer: PBS with 0.01% thimerosal, 50% glycerol, pH7.3.

Validation Data



Western blot analysis of various lysates using MCM8 Rabbit pAb (A12922) at 1:3000 dilution.
Secondary antibody: HRP Goat Anti-Rabbit IgG (H+L) (AS014) at 1:10000 dilution.
Lysates/proteins: 25µg per lane.
Blocking buffer: 3% nonfat dry milk in TBST.
Detection: ECL Basic Kit (RM00020).
Exposure time: 30s.