

SRP14 Rabbit pAb

Catalog No.: A12926

Basic Information

Observed MW

15-18kDa

Calculated MW

15kDa

Category

Primary antibody

Applications

WB,ELISA

Cross-Reactivity

Human, Mouse, Rat

Background

Enables RNA binding activity. Involved in protein targeting to ER. Located in nucleus. Part of signal recognition particle, endoplasmic reticulum targeting.

Recommended Dilutions

WB 1:500 - 1:2000

ELISA Recommended starting concentration is 1 µg/mL. Please optimize the concentration based on your specific assay requirements.

Immunogen Information

Gene ID

6727

Swiss Prot

P37108

Immunogen

Recombinant protein (or fragment). This information is considered to be commercially sensitive.

Synonyms

ALURBP; SRP14

Contact

☎ | 400-999-6126

✉ | cn.market@abclonal.com.cn

🌐 | www.abclonal.com.cn

Product Information

Source

Rabbit

Isotype

IgG

Purification

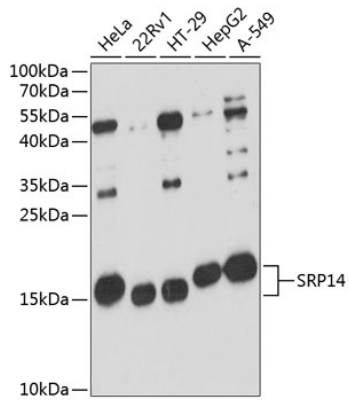
Affinity purification

Storage

Store at -20°C. Avoid freeze / thaw cycles.

Buffer: PBS with 0.01% thimerosal, 50% glycerol, pH7.3.

Validation Data



Western blot analysis of various lysates using SRP14 Rabbit pAb (A12926) at 1:3000 dilution.
Secondary antibody: HRP-conjugated Goat anti-Rabbit IgG (H+L) (AS014) at 1:10000 dilution.
Lysates/proteins: 25µg per lane.
Blocking buffer: 3% nonfat dry milk in TBST.
Detection: ECL Basic Kit (RM00020).
Exposure time: 90s.