

# COMT Rabbit pAb

Catalog No.: A1294

1 Publications

## Basic Information

### Observed MW

25kDa, 30kDa

### Calculated MW

30kDa

### Category

Primary antibody

### Applications

ELISA, WB, IP

### Cross-Reactivity

Human, Mouse

## Background

Catechol-O-methyltransferase catalyzes the transfer of a methyl group from S-adenosylmethionine to catecholamines, including the neurotransmitters dopamine, epinephrine, and norepinephrine. This O-methylation results in one of the major degradative pathways of the catecholamine transmitters. In addition to its role in the metabolism of endogenous substances, COMT is important in the metabolism of catechol drugs used in the treatment of hypertension, asthma, and Parkinson disease. COMT is found in two forms in tissues, a soluble form (S-COMT) and a membrane-bound form (MB-COMT). The differences between S-COMT and MB-COMT reside within the N-termini. Several transcript variants are formed through the use of alternative translation initiation sites and promoters.

## Recommended Dilutions

**WB** 1:500 - 1:2000**IP** 0.5µg-4µg antibody for  
200µg-400µg extracts of  
whole cells

## Immunogen Information

### Gene ID

1312

### Swiss Prot

P21964

### Immunogen

Recombinant fusion protein containing a sequence corresponding to amino acids 42-221 of human COMT (NP\_009294.1).

### Synonyms

HEL-S-98n; COMT

## Contact

 | 400-999-6126 | [cn.market@abclonal.com.cn](mailto:cn.market@abclonal.com.cn) | [www.abclonal.com.cn](http://www.abclonal.com.cn)

## Product Information

### Source

Rabbit

### Isotype

IgG

### Purification

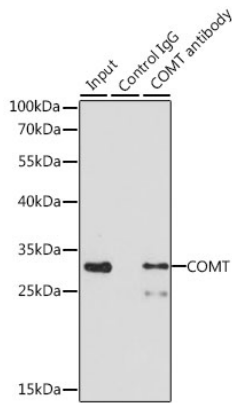
Affinity purification

### Storage

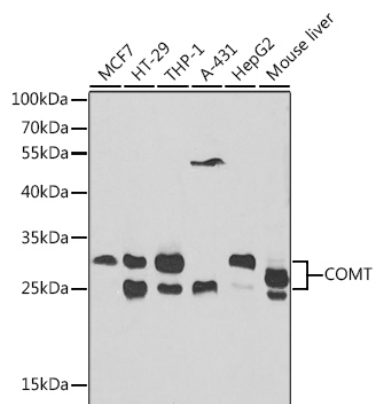
Store at -20°C. Avoid freeze / thaw cycles.

Buffer: PBS with 0.02% sodium azide, 50% glycerol, pH7.3.

Validation Data



Immunoprecipitation analysis of 200 µg extracts of MCF-7 cells, using 3 µg COMT antibody (A1294). Western blot was performed from the immunoprecipitate using COMT antibody (A1294) at a dilution of 1:1000.



Western blot analysis of various lysates using COMT Rabbit pAb (A1294) at 1:1000 dilution. Secondary antibody: HRP Goat Anti-Rabbit IgG (H+L) (AS014) at 1:10000 dilution. Lysates/proteins: 25µg per lane. Blocking buffer: 3% nonfat dry milk in TBST. Detection: ECL Basic Kit (RM00020). Exposure time: 60s.