

[KO Validated] CDK7 Rabbit pAb

Catalog No.: A12942 **KO Validated** **4 Publications**

Basic Information

Observed MW

40kDa

Calculated MW

39kDa

Category

Primary antibody

Applications

ELISA,WB,IF/ICC

Cross-Reactivity

Human, Mouse, Rat

Background

The protein encoded by this gene is a member of the cyclin-dependent protein kinase (CDK) family. CDK family members are highly similar to the gene products of *Saccharomyces cerevisiae cdc28*, and *Schizosaccharomyces pombe cdc2*, and are known to be important regulators of cell cycle progression. This protein forms a trimeric complex with cyclin H and MAT1, which functions as a Cdk-activating kinase (CAK). It is an essential component of the transcription factor TFIIF, that is involved in transcription initiation and DNA repair. This protein is thought to serve as a direct link between the regulation of transcription and the cell cycle.

Recommended Dilutions

WB	1:500 - 1:1000
IF/ICC	1:50 - 1:200

Immunogen Information

Gene ID

1022

Swiss Prot

P50613

Immunogen

Recombinant fusion protein containing a sequence corresponding to amino acids 211-346 of human CDK7 (NP_001790.1).

Synonyms

CAK; CAK1; HCAK; MO15; STK1; CDKN7; p39MO15; K7

Contact

 | 400-999-6126 | cn.market@abclonal.com.cn | www.abclonal.com.cn

Product Information

Source

Rabbit

Isotype

IgG

Purification

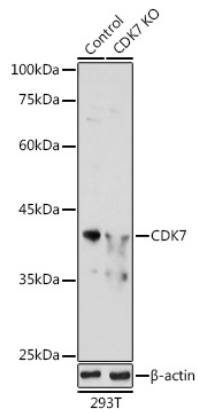
Affinity purification

Storage

Store at -20°C. Avoid freeze / thaw cycles.

Buffer: PBS with 0.01% thimerosal, 50% glycerol, pH7.3.

Validation Data



Western blot analysis of lysates from wild type (WT) and CDK7 knockout (KO) 293T cells, using [KO Validated] CDK7 Rabbit pAb (A12942) at 1:1000 dilution.

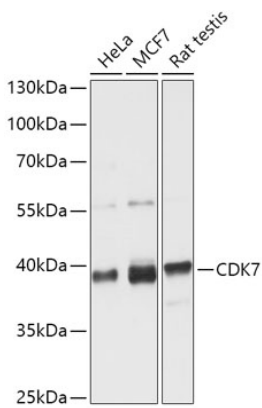
Secondary antibody: HRP Goat Anti-Rabbit IgG (H+L) (AS014) at 1:10000 dilution.

Lysates/proteins: 25µg per lane.

Blocking buffer: 3% nonfat dry milk in TBST.

Detection: ECL Basic Kit (RM00020).

Exposure time: 180s.



Western blot analysis of various lysates using [KO Validated] CDK7 Rabbit pAb (A12942) at 1:1000 dilution.

Secondary antibody: HRP Goat Anti-Rabbit IgG (H+L) (AS014) at 1:10000 dilution.

Lysates/proteins: 25µg per lane.

Blocking buffer: 3% nonfat dry milk in TBST.

Detection: ECL Basic Kit (RM00020).

Exposure time: 15s.