

SFRP2 Rabbit pAb

Catalog No.: A12959

Basic Information

Observed MW

33kDa

Calculated MW

33kDa

Category

Primary antibody

Applications

ELISA, WB, IF/ICC

Cross-Reactivity

Human, Mouse, Rat

Background

This gene encodes a member of the SFRP family that contains a cysteine-rich domain homologous to the putative Wnt-binding site of Frizzled proteins. SFRPs act as soluble modulators of Wnt signaling. Methylation of this gene is a potential marker for the presence of colorectal cancer.

Recommended Dilutions

WB	1:1000 - 1:3000
IF/ICC	1:50 - 1:200

Immunogen Information

Gene ID

6423

Swiss Prot

Q96HF1

Immunogen

A synthetic peptide corresponding to a sequence within amino acids 1-100 of human SFRP2 (NP_003004.1).

Synonyms

FRP-2; SARP1; SDF-5; SFRP2

Contact

☎ | 400-999-6126

✉ | cn.market@abclonal.com.cn

🌐 | www.abclonal.com.cn

Product Information

Source

Rabbit

Isotype

IgG

Purification

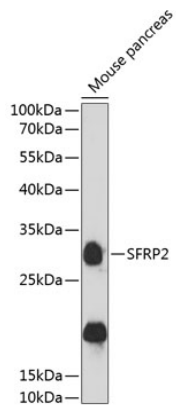
Affinity purification

Storage

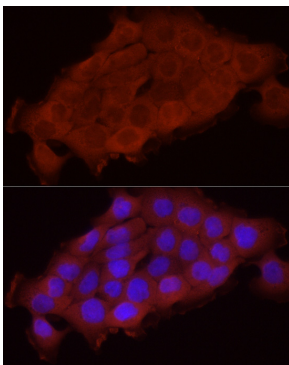
Store at -20°C. Avoid freeze / thaw cycles.

Buffer: PBS with 0.01% thimerosal, 50% glycerol, pH7.3.

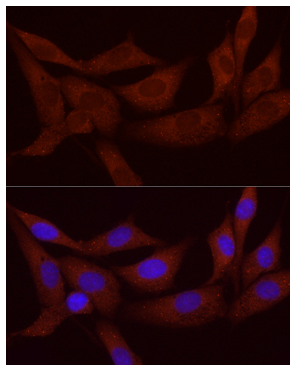
Validation Data



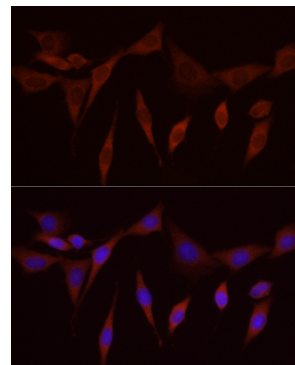
Western blot analysis of extracts of mouse pancreas, using SFRP2 antibody (A12959) at 1:3000 dilution.
Secondary antibody: HRP Goat Anti-Rabbit IgG (H+L) (AS014) at 1:10000 dilution.
Lysates/proteins: 25µg per lane.
Blocking buffer: 3% nonfat dry milk in TBST.
Detection: ECL Enhanced Kit (RM00021).
Exposure time: 90s.



Immunofluorescence analysis of A431 cells using SFRP2 Rabbit pAb (A12959) at dilution of 1:50 (40x lens). Blue: DAPI for nuclear staining.



Immunofluorescence analysis of NIH/3T3 cells using SFRP2 Rabbit pAb (A12959) at dilution of 1:50 (40x lens). Blue: DAPI for nuclear staining.



Immunofluorescence analysis of PC-12 cells using SFRP2 Rabbit pAb (A12959) at dilution of 1:50 (40x lens). Blue: DAPI for nuclear staining.