

# MYH6/ $\alpha$ -MHC Rabbit pAb

Catalog No.: A12964 **10 Publications**

## Basic Information

### Observed MW

250kDa

### Calculated MW

224kDa

### Category

Primary antibody

### Applications

ELISA, WB, IF/ICC

### Cross-Reactivity

Mouse, Rat

## Background

Cardiac muscle myosin is a hexamer consisting of two heavy chain subunits, two light chain subunits, and two regulatory subunits. This gene encodes the alpha heavy chain subunit of cardiac myosin. The gene is located approximately 4kb downstream of the gene encoding the beta heavy chain subunit of cardiac myosin. Mutations in this gene cause familial hypertrophic cardiomyopathy and atrial septal defect 3.

## Recommended Dilutions

WB 1:1000 - 1:2000

IF/ICC 1:50 - 1:200

## Immunogen Information

### Gene ID

4624

### Swiss Prot

P13533

### Immunogen

Recombinant fusion protein containing a sequence corresponding to amino acids 1-250 of human MYH6/ $\alpha$ -MHC (NP\_002462.2).

### Synonyms

ASD3; MYHC; SSS3; CMH14; MYHCA; CMD1EE; alpha-MHC; MYH6/ $\alpha$ -MHC

## Contact

☎ | 400-999-6126

✉ | [cn.market@abclonal.com.cn](mailto:cn.market@abclonal.com.cn)

🌐 | [www.abclonal.com.cn](http://www.abclonal.com.cn)

## Product Information

### Source

Rabbit

### Isotype

IgG

### Purification

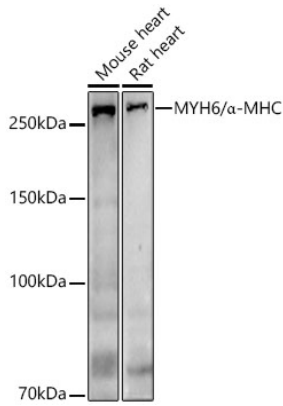
Affinity purification

### Storage

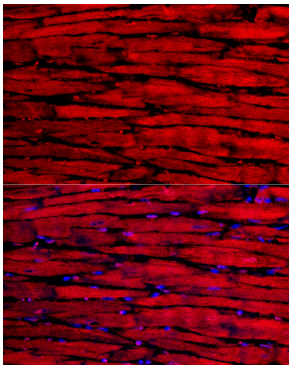
Store at -20°C. Avoid freeze / thaw cycles.

Buffer: PBS with 0.01% thimerosal, 50% glycerol, pH7.3.

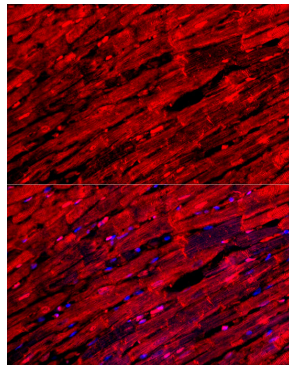
## Validation Data



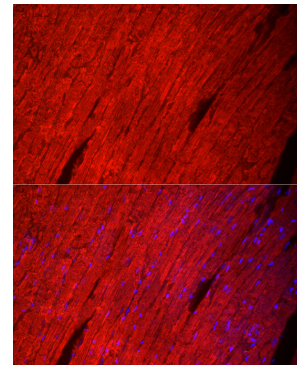
Western blot analysis of various lysates using MYH6/α-MHC Rabbit pAb (A12964) at 1:700 dilution. Secondary antibody: HRP Goat Anti-Rabbit IgG (H+L) (AS014) at 1:10000 dilution. Lysates/proteins: 25 µg per lane. Blocking buffer: 3% nonfat dry milk in TBST. Detection: ECL Basic Kit (RM00020). Exposure time: 180s.



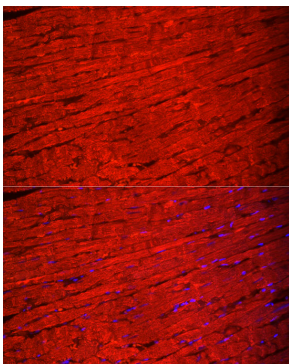
Immunofluorescence analysis of mouse heart cells using MYH6/α-MHC Rabbit pAb (A12964) at dilution of 1:100 (40x lens). Blue: DAPI for nuclear staining.



Immunofluorescence analysis of rat heart cells using MYH6/α-MHC Rabbit pAb (A12964) at dilution of 1:100 (40x lens). Blue: DAPI for nuclear staining.



Immunofluorescence analysis of mouse heart cells using MYH6/α-MHC Rabbit pAb (A12964) at dilution of 1:50 (40x lens). Blue: DAPI for nuclear staining.



Immunofluorescence analysis of rat heart cells using MYH6/α-MHC Rabbit pAb (A12964) at dilution of 1:50 (40x lens). Blue: DAPI for nuclear staining.