

# MYH6/ $\alpha$ -MHC Rabbit pAb

Catalog No.: A12964SP

## Basic Information

### Observed MW

250 kDa

### Calculated MW

224 kDa

### Category

Primary antibody

### Applications

WB,IF-P,IHC-P,ELISA

### Cross-Reactivity

Mouse, Rat

## Background

Cardiac muscle myosin is a hexamer consisting of two heavy chain subunits, two light chain subunits, and two regulatory subunits. This gene encodes the alpha heavy chain subunit of cardiac myosin. The gene is located approximately 4kb downstream of the gene encoding the beta heavy chain subunit of cardiac myosin. Mutations in this gene cause familial hypertrophic cardiomyopathy and atrial septal defect 3.

## Recommended Dilutions

**WB** 1:2000 - 1:20000

**IF-P** 1:100 - 1:200

**IHC-P** 1:1000 - 1:4000

**ELISA** Recommended starting concentration is 1  $\mu$ g/mL. Please optimize the concentration based on your specific assay requirements. For high-ratio antibody dilutions ( $\geq$ 1:10000) a sequential dilution method is strongly recommended to ensure measurement accuracy.

## Immunogen Information

### Gene ID

4624

### Swiss Prot

P13533

### Immunogen

This information is considered to be commercially sensitive.

### Synonyms

ASD3; MYHC; SSS3; CMH14; MYHCA; CMD1EE; alpha-MHC; MYH6/ $\alpha$ -MHC

## Product Information

### Source

Rabbit

### Isotype

IgG

### Purification

Affinity purification

### Storage

Store at -20°C. Avoid freeze / thaw cycles.

Buffer: PBS, pH 7.3, containing 50% glycerol. Preserved with Proclin300 or sodium azide.

May contain 0.05% BSA as specified on the Certificate of Analysis.

## Contact

---

 | 400-999-6126

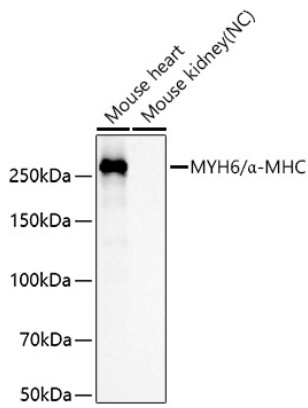
 | [cn.market@abclonal.com.cn](mailto:cn.market@abclonal.com.cn)

 | [www.abclonal.com.cn](http://www.abclonal.com.cn)

---

## Validation Data

---



Western blot analysis of various lysates using MYH6/α-MHC Rabbit pAb (A12964SP) at 1:20000 dilution incubated overnight at 4°C.  
Secondary antibody: HRP-conjugated Goat anti-Rabbit IgG (H+L) (AS014) at 1:10000 dilution.  
Lysates/proteins: 25 µg per lane.  
Blocking buffer: 3% nonfat dry milk in TBST.  
Detection: ECL Basic Kit (RM00020).  
Negative control (NC): Mouse kidney.  
Exposure time: 20 s.