

Semaphorin 3A Rabbit pAb

Catalog No.: A12967 **1 Publications**

Basic Information

Observed MW

89kDa

Calculated MW

89kDa

Category

Primary antibody

Applications

ELISA, WB

Cross-Reactivity

Mouse, Rat

Background

This gene is a member of the semaphorin family and encodes a protein with an Ig-like C2-type (immunoglobulin-like) domain, a PSI domain and a Sema domain. This secreted protein can function as either a chemorepulsive agent, inhibiting axonal outgrowth, or as a chemoattractive agent, stimulating the growth of apical dendrites. In both cases, the protein is vital for normal neuronal pattern development. Increased expression of this protein is associated with schizophrenia and is seen in a variety of human tumor cell lines. Also, aberrant release of this protein is associated with the progression of Alzheimer's disease.

Recommended Dilutions

WB 1:500 - 1:1000

Immunogen Information

Gene ID

10371

Swiss Prot

Q14563

Immunogen

A synthetic peptide corresponding to a sequence within amino acids 300-400 of human Semaphorin 3A (NP_006071.1).

Synonyms

HH16; SemD; COLL1; SEMA1; SEMAD; SEMAL; coll-1; Hsema-I; SEMAIII; Hsema-III; Semaphorin 3A

Contact

 | 400-999-6126

 | cn.market@abclonal.com.cn

 | www.abclonal.com.cn

Product Information

Source

Rabbit

Isotype

IgG

Purification

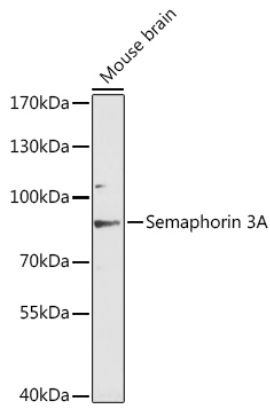
Affinity purification

Storage

Store at -20°C. Avoid freeze / thaw cycles.

Buffer: PBS with 0.01% thimerosal, 50% glycerol, pH7.3.

Validation Data



Western blot analysis of lysates from mouse brain, using Semaphorin 3A Rabbit pAb (A12967) at 1:3000 dilution.

Secondary antibody: HRP Goat Anti-Rabbit IgG (H+L) (AS014) at 1:10000 dilution.

Lysates/proteins: 25µg per lane.

Blocking buffer: 3% nonfat dry milk in TBST.

Detection: ECL Enhanced Kit (RM00021).

Exposure time: 90s.