

# HNRNPH2 Rabbit pAb

**Catalog No.: A12993**

## Basic Information

**Observed MW**

55kDa

**Calculated MW**

49kDa

**Category**

Primary antibody

**Applications**

ELISA,WB

**Cross-Reactivity**

Human

## Background

This gene belongs to the subfamily of ubiquitously expressed heterogeneous nuclear ribonucleoproteins (hnRNPs). The hnRNPs are RNA binding proteins and they complex with heterogeneous nuclear RNA (hnRNA). These proteins are associated with pre-mRNAs in the nucleus and appear to influence pre-mRNA processing and other aspects of mRNA metabolism and transport. While all of the hnRNPs are present in the nucleus some seem to shuttle between the nucleus and the cytoplasm. The hnRNP proteins have distinct nucleic acid binding properties. The protein encoded by this gene has three repeats of quasi-RRM domains that binds to RNAs. It is very similar to the family member HNRPH1. This gene is thought to be involved in Fabray disease and X-linked agammaglobulinemia phenotype. Alternative splicing results in multiple transcript variants encoding the same protein. Read-through transcription between this locus and the ribosomal protein L36a gene has been observed.

## Recommended Dilutions

**WB** 1:1000 - 1:5000

## Immunogen Information

**Gene ID**

3188

**Swiss Prot**

P55795

**Immunogen**

Recombinant fusion protein containing a sequence corresponding to amino acids 210-285 of human HNRNPH2 (NP\_062543.1).

**Synonyms**

FTP3; MRXSB; NRPH2; HNRPH'; HNRPH2; hnRNPH'; HNRNPH2

## Contact

 | 400-999-6126 | [cn.market@abclonal.com.cn](mailto:cn.market@abclonal.com.cn) | [www.abclonal.com.cn](http://www.abclonal.com.cn)

## Product Information

**Source**

Rabbit

**Isotype**

IgG

**Purification**

Affinity purification

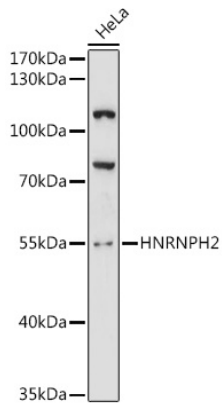
**Storage**

Store at -20°C. Avoid freeze / thaw cycles.

Buffer: PBS with 0.01% thimerosal, 50% glycerol, pH7.3.

## Validation Data

---



Western blot analysis of lysates from HeLa cells, using HNRNPH2 Rabbit pAb (A12993) at 1:3000 dilution.  
Secondary antibody: HRP Goat Anti-Rabbit IgG (H+L) (AS014) at 1:10000 dilution.  
Lysates/proteins: 25µg per lane.  
Blocking buffer: 3% nonfat dry milk in TBST.  
Detection: ECL Basic Kit (RM00020).  
Exposure time: 90s.