

AQP2 Rabbit pAb

Catalog No.: A12998

Basic Information

Observed MW

Refer to figures

Calculated MW

29kDa

Category

Primary antibody

Applications

ELISA, IHC-P

Cross-Reactivity

Mouse

Background

This gene encodes a water channel protein located in the kidney collecting tubule. It belongs to the MIP/aquaporin family, some members of which are clustered together on chromosome 12q13. Mutations in this gene have been linked to autosomal dominant and recessive forms of nephrogenic diabetes insipidus.

Recommended Dilutions

IHC-P 1:50 - 1:200

Immunogen Information

Gene ID

359

Swiss Prot

P41181

Immunogen

Recombinant fusion protein containing a sequence corresponding to amino acids 147-271 of human AQP2 (NP_000477.1).

Synonyms

NDI2; AQP-CD; WCH-CD; AQP2

Contact

 | 400-999-6126

 | cn.market@abclonal.com.cn

 | www.abclonal.com.cn

Product Information

Source

Rabbit

Isotype

IgG

Purification

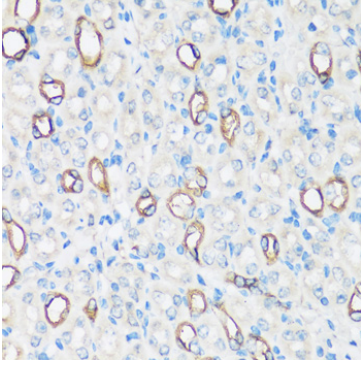
Affinity purification

Storage

Store at -20°C. Avoid freeze / thaw cycles.

Buffer: PBS with 0.01% thimerosal, 50% glycerol, pH7.3.

Validation Data



Immunohistochemistry analysis of paraffin-embedded mouse kidney using AQP2 Rabbit pAb (A12998) at dilution of 1:100 (40x lens). Perform microwave antigen retrieval with 10 mM PBS buffer pH 7.2 before commencing with IHC staining protocol.