

CALHM2 Rabbit pAb

Catalog No.: A13006

Basic Information

Observed MW

36kDa

Calculated MW

36kDa

Category

Primary antibody

Applications

ELISA, WB

Cross-Reactivity

Human, Rat

Background

Predicted to enable cation channel activity. Involved in positive regulation of apoptotic process. Predicted to be integral component of plasma membrane.

Recommended Dilutions

WB 1:100 - 1:500

Immunogen Information

Gene ID

51063

Swiss Prot

Q9HA72

Immunogen

Recombinant fusion protein containing a sequence corresponding to amino acids 1-323 of human CALHM2 (NP_057000.2).

Synonyms

FAM26B; CALHM2

Contact

 | 400-999-6126

 | cn.market@abclonal.com.cn

 | www.abclonal.com.cn

Product Information

Source

Rabbit

Isotype

IgG

Purification

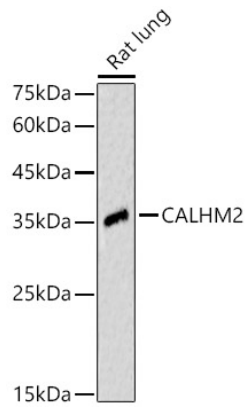
Affinity purification

Storage

Store at -20°C. Avoid freeze / thaw cycles.

Buffer: PBS with 0.05% proclin300, 50% glycerol, pH7.3.

Validation Data



Western blot analysis of Rat lung, using CALHM2 antibody (A13006) at 1:500 dilution.
Secondary antibody: HRP Goat Anti-Rabbit IgG (H+L) (AS014) at 1:10000 dilution.
Lysates/proteins: 25µg per lane.
Blocking buffer: 3% nonfat dry milk in TBST.
Detection: ECL Enhanced Kit (RM00021).
Exposure time: 60s.