

# ARR3 Rabbit pAb

Catalog No.: A13009 **1 Publications**

## Basic Information

### Observed MW

42kDa

### Calculated MW

43kDa

### Category

Primary antibody

### Applications

ELISA, WB

### Cross-Reactivity

Mouse, Rat

## Background

The protein encoded by this gene is a non-visual arrestin which binds to agonist-activated, phosphorylated G protein-coupled receptors. This binding uncouples the receptor from the heterotrimeric G protein, resulting in termination of the G protein-coupled receptor signaling. The encoded protein also is a part of the centrosome, interacting with gamma-tubulin to help regulate proper centrosome function.

## Recommended Dilutions

WB 1:500 - 1:2000

## Immunogen Information

### Gene ID

407

### Swiss Prot

P36575

### Immunogen

Recombinant fusion protein containing a sequence corresponding to amino acids 1-260 of human ARR3 (NP\_004303.2).

### Synonyms

ARRX; cArr; MYP26; ARR3

## Contact

 | 400-999-6126

 | [cn.market@abclonal.com.cn](mailto:cn.market@abclonal.com.cn)

 | [www.abclonal.com.cn](http://www.abclonal.com.cn)

## Product Information

### Source

Rabbit

### Isotype

IgG

### Purification

Affinity purification

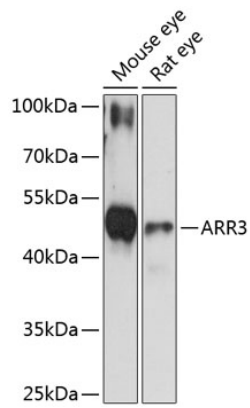
### Storage

Store at -20°C. Avoid freeze / thaw cycles.

Buffer: PBS with 0.01% thimerosal, 50% glycerol, pH7.3.

## Validation Data

---



Western blot analysis of various lysates using ARR3 Rabbit pAb (A13009) at 1:3000 dilution.  
Secondary antibody: HRP Goat Anti-Rabbit IgG (H+L) (AS014) at 1:10000 dilution.  
Lysates/proteins: 25 $\mu$ g per lane.  
Blocking buffer: 3% nonfat dry milk in TBST.  
Detection: ECL Basic Kit (RM00020).  
Exposure time: 10s.