

DEC R1 Rabbit pAb

Catalog No.: A13014 **2 Publications**

Basic Information

Observed MW

33kDa

Calculated MW

36kDa

Category

Primary antibody

Applications

ELISA, WB

Cross-Reactivity

Human, Mouse, Rat

Background

Enables 2,4-dienoyl-CoA reductase (NADPH) activity; NADPH binding activity; and identical protein binding activity. Involved in fatty acid beta-oxidation. Located in cytosol; mitochondrion; and nucleoplasm. Part of catalytic complex.

Recommended Dilutions

WB 1:500 - 1:2000

Immunogen Information

Gene ID

1666

Swiss Prot

Q16698

Immunogen

Recombinant fusion protein containing a sequence corresponding to amino acids 35-335 of human DEC R1 (NP_001350.1).

Synonyms

DEC R; NADPH; SDR18C1; DEC R1

Contact

 | 400-999-6126

 | cn.market@abclonal.com.cn

 | www.abclonal.com.cn

Product Information

Source

Rabbit

Isotype

IgG

Purification

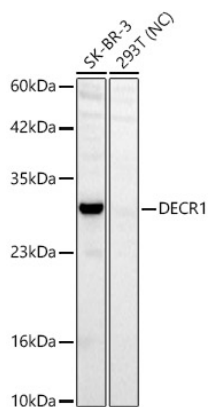
Affinity purification

Storage

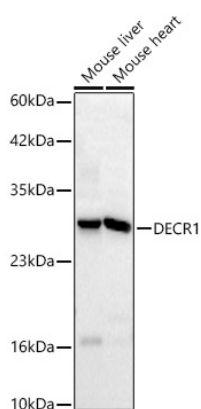
Store at -20°C. Avoid freeze / thaw cycles.

Buffer: PBS with 0.01% thimerosal, 50% glycerol, pH 7.3.

Validation Data



Western blot analysis of various lysates using DEC R1 Rabbit pAb (A13014) at 1:2000 dilution.
Secondary antibody: HRP Goat Anti-Rabbit IgG (H+L)(AS014) at 1:10000 dilution.
Lysates/proteins: 25 µg per lane.
Blocking buffer: 3% nonfat dry milk in TBST.
Detection: ECL Basic Kit (RM00020).
Negative control (NC): 293T.
Exposure time: 30s.



Western blot analysis of various lysates using DEC R1 Rabbit pAb (A13014) at 1:2000 dilution.
Secondary antibody: HRP Goat Anti-Rabbit IgG (H+L)(AS014) at 1:10000 dilution.
Lysates / proteins: 25 µg per lane.
Blocking buffer: 3 % nonfat dry milk in TBST.
Detection: ECL Basic Kit (RM00020).
Exposure time: 30s.