

PDE4C Rabbit pAb

Catalog No.: A13038

Basic Information

Observed MW

Refer to Figures

Calculated MW

80kDa

Category

Primary antibody

Applications

ELISA,IF/ICC

Cross-Reactivity

Human, Rat

Background

The protein encoded by this gene belongs to the cyclic nucleotide phosphodiesterase (PDE) family, and PDE4 subfamily. This PDE hydrolyzes the second messenger, cAMP, which is a regulator and mediator of a number of cellular responses to extracellular signals. Thus, by regulating the cellular concentration of cAMP, this protein plays a key role in many important physiological processes. Alternatively spliced transcript variants encoding different isoforms have been described for this gene.

Recommended Dilutions

IF/ICC 1:100 - 1:500

Immunogen Information

Gene ID

5143

Swiss Prot

Q08493

Immunogen

Recombinant fusion protein containing a sequence corresponding to amino acids 638-712 of human PDE4C (NP_000914.2).

Synonyms

DPDE1; PDE21; PDE4C

Contact

☎ | 400-999-6126

✉ | cn.market@abclonal.com.cn

🌐 | www.abclonal.com.cn

Product Information

Source

Rabbit

Isotype

IgG

Purification

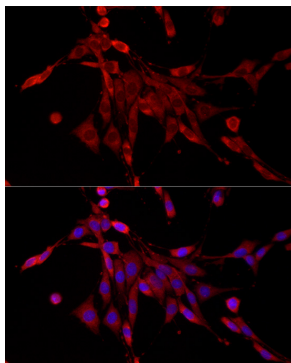
Affinity purification

Storage

Store at -20°C. Avoid freeze / thaw cycles.

Buffer: PBS with 0.01% thimerosal,50% glycerol,pH7.3.

Validation Data



Immunofluorescence analysis of PC-12 cells using PDE4C Rabbit pAb (A13038) at dilution of 1:400 (40x lens). Secondary antibody: Cy3 Goat Anti-Rabbit IgG (H+L) (AS007) at 1:500 dilution. Blue: DAPI for nuclear staining.