

# AP3D1 Rabbit pAb

Catalog No.: A13058

## Basic Information

### Observed MW

110kDa

### Calculated MW

130kDa

### Category

Primary antibody

### Applications

ELISA, WB

### Cross-Reactivity

Human, Mouse

## Background

The protein encoded by this gene is a subunit of the AP3 adaptor-like complex, which is not clathrin-associated, but is associated with the golgi region, as well as more peripheral structures. The AP-3 complex facilitates the budding of vesicles from the golgi membrane, and may be directly involved in trafficking to lysosomes. This subunit is implicated in intracellular biogenesis and trafficking of pigment granules, and possibly platelet dense granules and neurotransmitter vesicles. Defects in this gene are a cause of a new type of Hermansky-Pudlak syndrome.

## Recommended Dilutions

WB 1:500 - 1:2000

## Immunogen Information

### Gene ID

8943

### Swiss Prot

O14617

### Immunogen

Recombinant fusion protein containing a sequence corresponding to amino acids 520-700 of human AP3D1 (NP\_003929.4).

### Synonyms

ADTD; HPS10; hBLVR; AP3D1

## Contact

☎ | 400-999-6126

✉ | [cn.market@abclonal.com.cn](mailto:cn.market@abclonal.com.cn)

🌐 | [www.abclonal.com.cn](http://www.abclonal.com.cn)

## Product Information

### Source

Rabbit

### Isotype

IgG

### Purification

Affinity purification

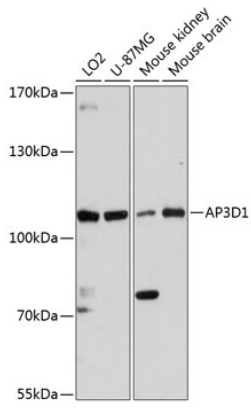
### Storage

Store at -20°C. Avoid freeze / thaw cycles.

Buffer: PBS with 0.01% thimerosal, 50% glycerol, pH7.3.

## Validation Data

---



Western blot analysis of various lysates using AP3D1 Rabbit pAb (A13058) at 1:3000 dilution.  
Secondary antibody: HRP Goat Anti-Rabbit IgG (H+L) (AS014) at 1:10000 dilution.  
Lysates/proteins: 25µg per lane.  
Blocking buffer: 3% nonfat dry milk in TBST.  
Detection: ECL Basic Kit (RM00020).  
Exposure time: 90s.