

# PITPNM1 Rabbit pAb

Catalog No.: A13063

## Basic Information

### Observed MW

135kDa

### Calculated MW

135kDa

### Category

Primary antibody

### Applications

ELISA, WB

### Cross-Reactivity

Human, Mouse, Rat

## Background

PITPNM1 belongs to a family of membrane-associated phosphatidylinositol transfer domain-containing proteins that share homology with the Drosophila retinal degeneration B (rdgB) protein (Ocana et al., 2005 [PubMed 15627748]).

## Recommended Dilutions

WB 1:500 - 1:2000

## Immunogen Information

### Gene ID

9600

### Swiss Prot

O00562

### Immunogen

Recombinant fusion protein containing a sequence corresponding to amino acids 110-190 of human PITPNM1 (NP\_004901.2).

### Synonyms

Rd9; NIR2; RDGB; DRES9; RDGB1; RDGBA; PITPNM; RDGBA1; PITPNM1

## Contact

 | 400-999-6126

 | [cn.market@abclonal.com.cn](mailto:cn.market@abclonal.com.cn)

 | [www.abclonal.com.cn](http://www.abclonal.com.cn)

## Product Information

### Source

Rabbit

### Isotype

IgG

### Purification

Affinity purification

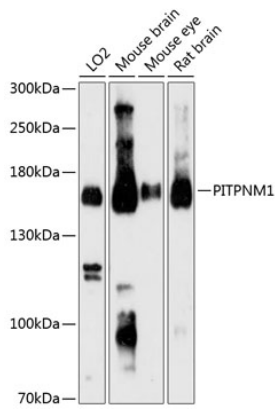
### Storage

Store at -20°C. Avoid freeze / thaw cycles.

Buffer: PBS with 0.01% thimerosal, 50% glycerol, pH7.3.

## Validation Data

---



Western blot analysis of various lysates using PITPNM1 Rabbit pAb (A13063) at 1:3000 dilution.  
Secondary antibody: HRP Goat Anti-Rabbit IgG (H+L) (AS014) at 1:10000 dilution.  
Lysates/proteins: 25 $\mu$ g per lane.  
Blocking buffer: 3% nonfat dry milk in TBST.  
Detection: ECL Basic Kit (RM00020).  
Exposure time: 90s.